

Xi-DESIGNER

Finish Collection



Xi-GRANITE

DESCRIPTION

Xi-Granite is an acrylic multi-colored stone finish in a clear binder. When applied with a trowel, it will give the look of polished granite, but at a fraction of the weight.

USAGE

Xi-Granite creates a smooth and elegant finish that is perfect for contemporary or traditional styles. Available in 5 Standard colors and custom colors upon request.

Xi-Granite is a great option for those looking to create a granite finish to their space without the cost and maintenance of natural stone.

SUBSTRATES

- Concrete
- Stucco
- CMU
- Masonry
- Interior gypsum board

“Wet” areas require a sealer.

FEATURES / BENEFITS

- Lightweight option versus Natural Stone
- Varying aesthetics
- Easy to apply

PACKAGING

5 Gallon pail

COVERAGE

80-90 ft² per pail

Coverages are approximate and will vary depending on application methods and environmental/ surface conditions.

SHELF LIFE

12 months - stored off the ground, unopened, protected from moisture, extreme heat 90°F (32°C) and direct sunlight.

SURFACE PREPARATION

Clean all surface by removing dirt dust and debris prior to application.

The surface must be clean, dry, sound and free of contaminants such as paint, dust, oil, mildew and efflorescence.

Ambient conditions, substrate and the product itself must be at a minimum of 40°F during application and at least 48 hours

The surface must be smooth and level, Xi-Granite is a thin product and cannot correct any imperfections in the substrate.

MIXING

Stir very carefully at low speeds until just mixed. Do not add water when mixing.

APPLICATION

Xi-Designer Finishes are each unique to the product, application methods and substrate and the final appearance is solely dependent upon the applications skill and application techniques.

The contractor must be qualified in the installation of the product.

A written acceptance of a sample mock-up of the final product using the application method and tools to be used in the actual installation is required between the owner and the contractor.

Xi-Granite must be applied in a continuous manner, maintaining a wet edge to stopping points (corners, control joints). Do not over trowel the finish.

Step 1 - Apply a layer of Xi-Quartz with a stainless steel plaster trowel to a thickness of 1/16-1/8 inch.

Step 2 - While the material is drying and not yet set (approximately 30 minutes depending on temperature and humidity), float the surface with a plastic or stainless steel float to bring the reflective aggregate to the surface.

CLEAN UP

Clean tools and equipment with water immediately and during use. Dried material can only be removed mechanically.

CAUTIONS / LIMITATIONS

In no way is FACADESXi responsible for color variations or color correctness after the product has been applied, or for application on substrates out of accordance with the manufacturers' specifications, building code, associations standards or guidelines.

Provide supplemental heat and protection from moisture as needed.

Use only clean tools and materials to avoid contamination.

Avoid application in direct sunlight.

Only use cleaners approved by FacadesXi.

SAFETY

**KEEP OUT OF REACH OF CHILDREN.
FOR PROFESSIONAL USE ONLY.
DO NOT ALLOW PRODUCT TO FREEZE.
VOC < 10 GRAMS PER LITER.**

The instructions for use and application and warnings have been prepared in good faith based on the information available at the time of publication.

All instructions are intended to provide product users with the proper guidelines for use and application under normal working and environmental conditions. Because each project and user is different, FACADESXi cannot be held responsible for any consequences of variations in conditions or for unforeseen conditions when using this product.

For the most up to date information go to:

facadesxi.com.

WARNINGS

Use of this product can expose you to Crystalline Silica, a chemical that has been known to the State of California to cause cancer, birth defects, or other reproductive harm. For more information:

P65Warnings.ca.gov

INHALATION

This product is considered an irritant if proper precautions aren't followed. Use a NIOSH approved respirator mask and adequate ventilation when using the product. Avoid overexposure. Open windows and doors to confined areas during the application and drying process. Ensure fresh airflow is available. Leave the area of application immediately if you experience watery eyes, dizziness, or a headache.

SKIN CONTACT

Do not get product in your eyes or on your skin. Wash hands thoroughly after use.

EYE CONTACT

Rinse eyes thoroughly with water for several minutes. Remove contact lenses then continue to rinse.

DO NOT TAKE INTERNALLY

Immediately contact the Poison Control Center if swallowed. Store product in its original container sealed tightly after use.

EXPOSURE TO LEAD

Scraping sand or old paint chips may result in toxic lead exposure. For more information, call the National Lead Information Hotline at **1-800-424-LEAD** or visit online at: epa.gov/lead.

PLEASE NOTE

The most current Safety Data Sheet and Product Data Sheet can be found on our website for more information on product handling

Xi-DESIGNER

Finish Collection

Xi-GRANITE



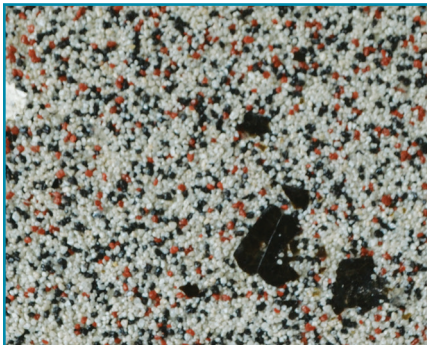
E110 Blue Granite



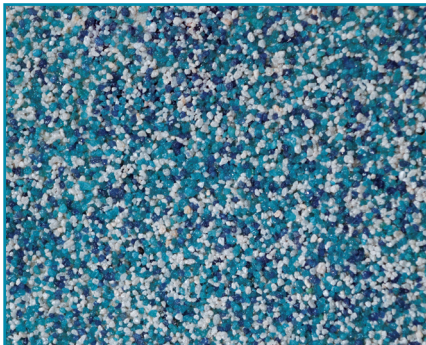
E120 Black Granite



E140 RedTip



E 150 Sienna



E160 Aqua



E180 Coffee



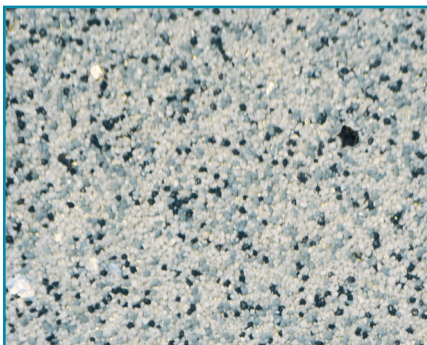
E200 Blue Stone



E210 Caramel



E220 SageBrush



E230 Black Ice