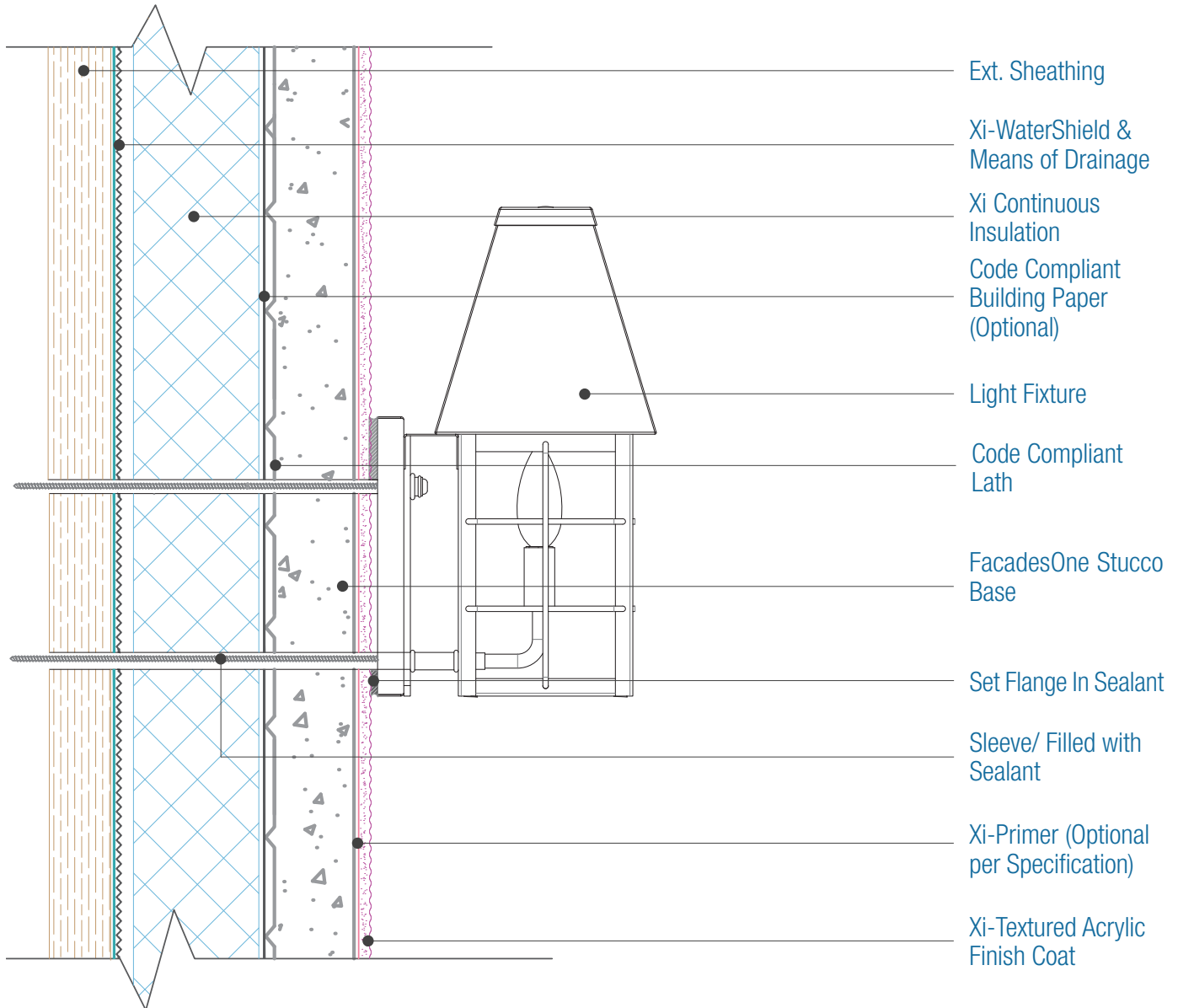




15262 Capital Port  
 San Antonio, TX 78249  
 1-800-611-6602  
 facadesxi.com

# FacadesOne WaterShield Xi-Series Assembly Fixture Attachment

Date: 06-15-2021 | Detail: F1WSXI.V.3 v1



- Ext. Sheathing
- Xi-WaterShield & Means of Drainage
- Xi Continuous Insulation
- Code Compliant Building Paper (Optional)
- Light Fixture
- Code Compliant Lath
- FacadesOne Stucco Base
- Set Flange In Sealant
- Sleeve/ Filled with Sealant
- Xi-Primer (Optional per Specification)
- Xi-Textured Acrylic Finish Coat

**NOTES:**

1. For full assembly options, materials and placement of materials refer to the specific FACADESXI System specifications
2. FXI WaterShield transition and accessory products and installation can be found in the project specifications, product datasheets and the WaterShield Details.
3. Drainage is required per the current Evaluation Report. See Detail I.3 for material options.
4. Attach penetrations to structural member.

**DISCLAIMER:** FACADESXI details are recommendations that should be used for guidance only. There may be equivalent means of installation that are not shown in FACADESXI assembly details. All FACADESXI products shall be installed in accordance with FACADESXI product datasheets and all applicable building codes and industry standard practices. The design, engineering and final details incorporating any FACADESXI product are the sole responsibility of the project design professional. FACADESXI is not responsible for determining the acceptability and/or applicability of any FACADESXI product or detail for any specific project or condition. FACADESXI disclaims all liability for improper installation, workmanship, or design by a third-party. EXCEPT FOR ANY EXPRESS REPRESENTATIONS AND WARRANTIES BY FACADESXI, ALL IMPLIED WARRANTIES OF ANY KIND, INCLUDING BUT NOT LIMITED TO WARRANTIES OF MERCHANTABILITY OR FITNESS FOR A PARTICULAR PURPOSE OR COMPLIANCE WITH LAWS OR GOVERNMENT RULES OR REGULATIONS APPLICABLE TO THE PROJECT, ARE HEREBY DISCLAIMED. FACADESXI's website should always be consulted for the latest version of any details and/or product information. Contact FACADESXI for any technical assistance.