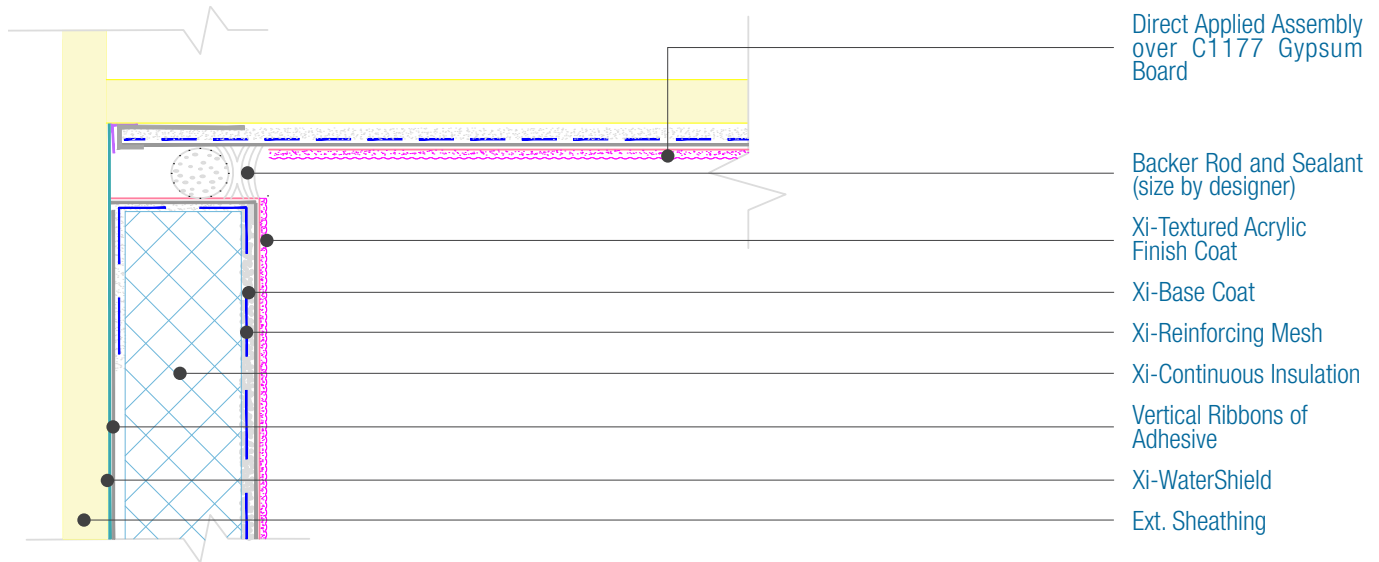




15262 Capital Port
 San Antonio, TX 78249
 1-833-899-0787
 facadesxi.com

WaterShield Xterior Insulation Wall to Soffit

Date. 06-15-2021 | Detail. WSXI.IV.1 v1



Direct Applied Assembly
 over C1177 Gypsum
 Board

Backer Rod and Sealant
 (size by designer)

Xi-Textured Acrylic
 Finish Coat

Xi-Base Coat

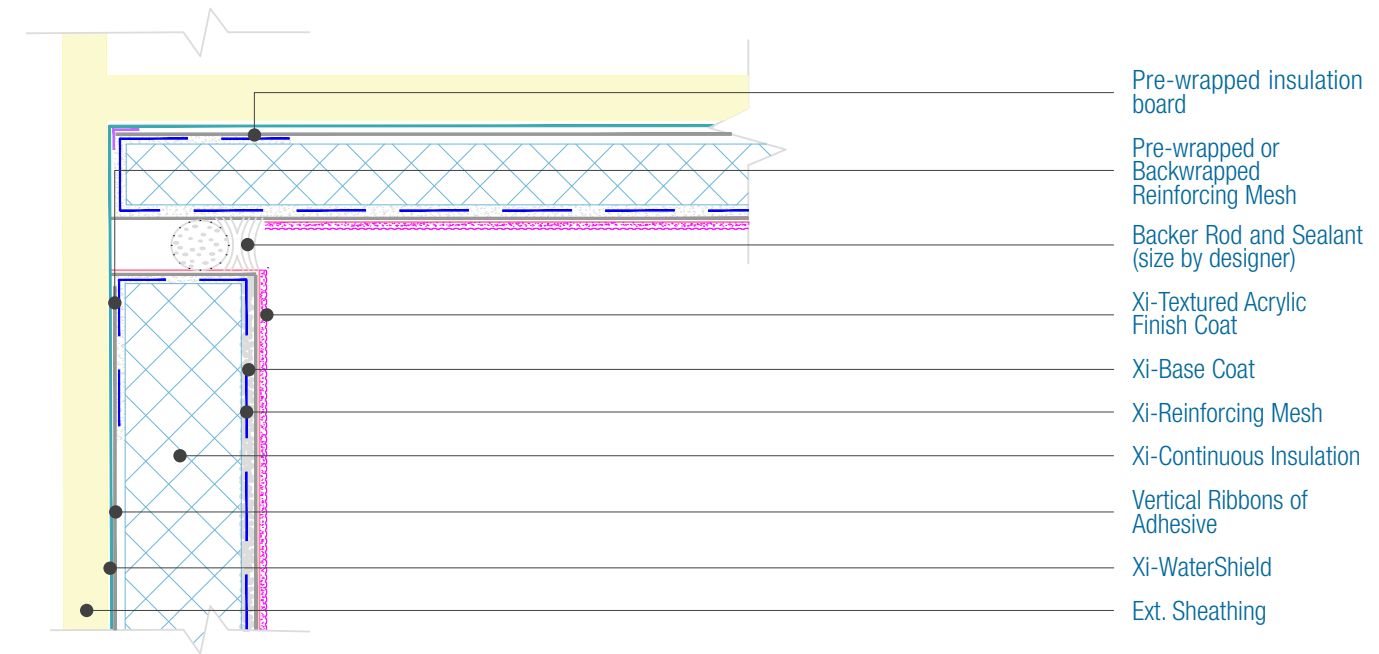
Xi-Reinforcing Mesh

Xi-Continuous Insulation

Vertical Ribbons of
 Adhesive

Xi-WaterShield

Ext. Sheathing



Pre-wrapped insulation
 board

Pre-wrapped or
 Backwrapped
 Reinforcing Mesh

Backer Rod and Sealant
 (size by designer)

Xi-Textured Acrylic
 Finish Coat

Xi-Base Coat

Xi-Reinforcing Mesh

Xi-Continuous Insulation

Vertical Ribbons of
 Adhesive

Xi-WaterShield

Ext. Sheathing

NOTES:

1. For full assembly options, materials and placement of materials refer to the specific FACADESXI System specifications.
2. Insulation boards on soffits may not be applied in enclosed areas.
3. See DAFS specification for soffit application.
4. A water resistive barrier is not required on non exposed soffits, however if an air barrier is required, the full system should be installed. The lamina may not be installed directly over WaterShield.

DISCLAIMER: FACADESXI details are recommendations that should be used for guidance only. There may be equivalent means of installation that are not shown in FACADESXI assembly details. All FACADESXI products shall be installed in accordance with FACADESXI product datasheets and all applicable building codes and industry standard practices. The design, engineering and final details incorporating any FACADESXI product are the sole responsibility of the project design professional. FACADESXI is not responsible for determining the acceptability and/or applicability of any FACADESXI product or detail for any specific project or condition. FACADESXI disclaims all liability for improper installation, workmanship, or design by a third-party. EXCEPT FOR ANY EXPRESS REPRESENTATIONS AND WARRANTIES BY FACADESXI, ALL IMPLIED WARRANTIES OF ANY KIND, INCLUDING BUT NOT LIMITED TO WARRANTIES OF MERCHANTABILITY OR FITNESS FOR A PARTICULAR PURPOSE OR COMPLIANCE WITH LAWS OR GOVERNMENT RULES OR REGULATIONS APPLICABLE TO THE PROJECT, ARE HEREBY DISCLAIMED. FACADESXI's website should always be consulted for the latest version of any details and/or product information. Contact FACADESXI for any technical assistance.