



FacadesThree Xi-Series Assembly Details

Table of Contents

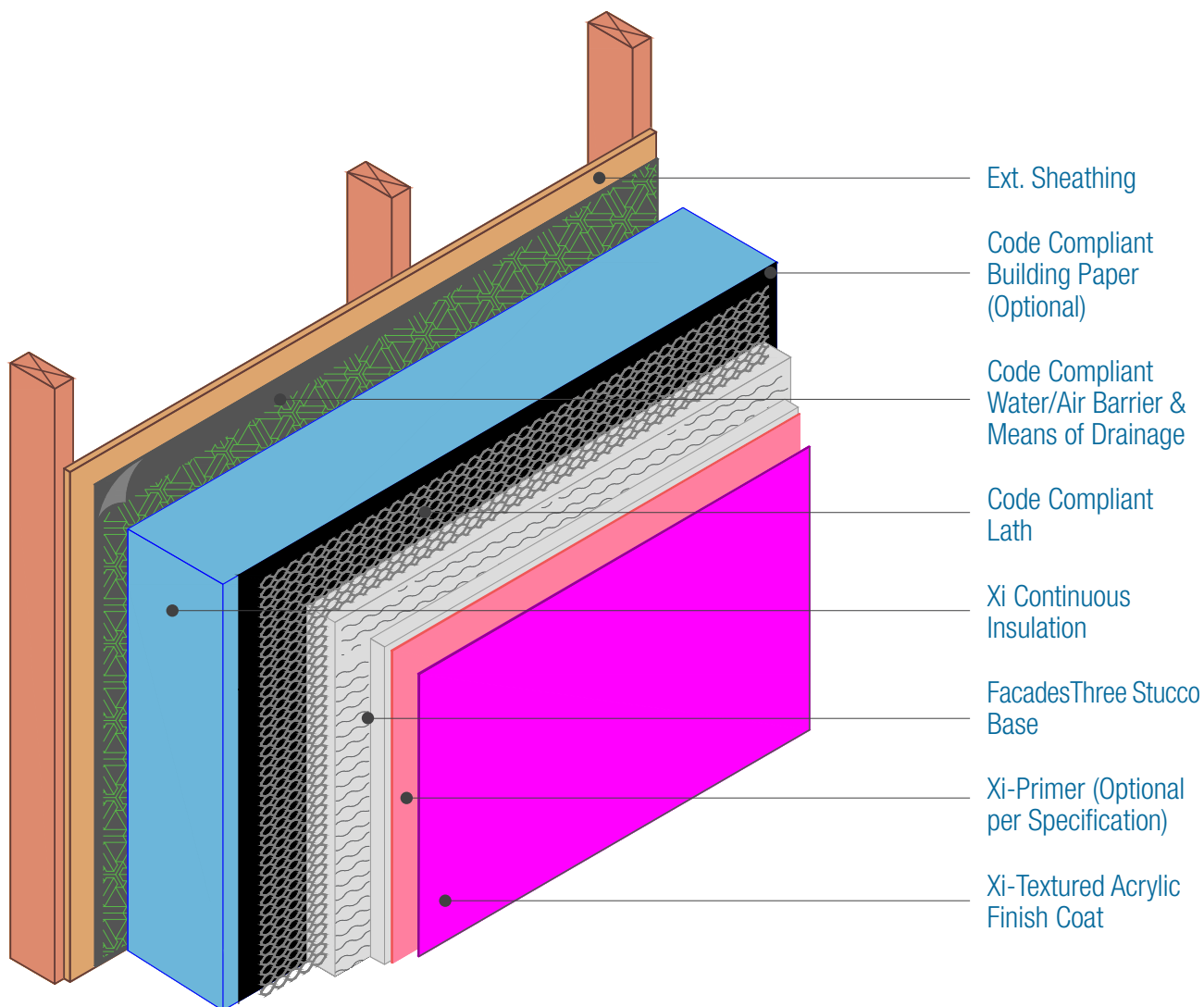




15262 Capital Port
San Antonio, TX 78249
1-800-611-6602
facadesxi.com

FacadesThree Xi-Series Assembly Assembly Overview - Isometric

Date: 10-15-2020 | Detail. F3XI.I.1 v1



NOTES:

1. For full assembly options, materials and placement of materials refer to the specific FacadesXi System specifications.
2. See Detail I.3 for material options.

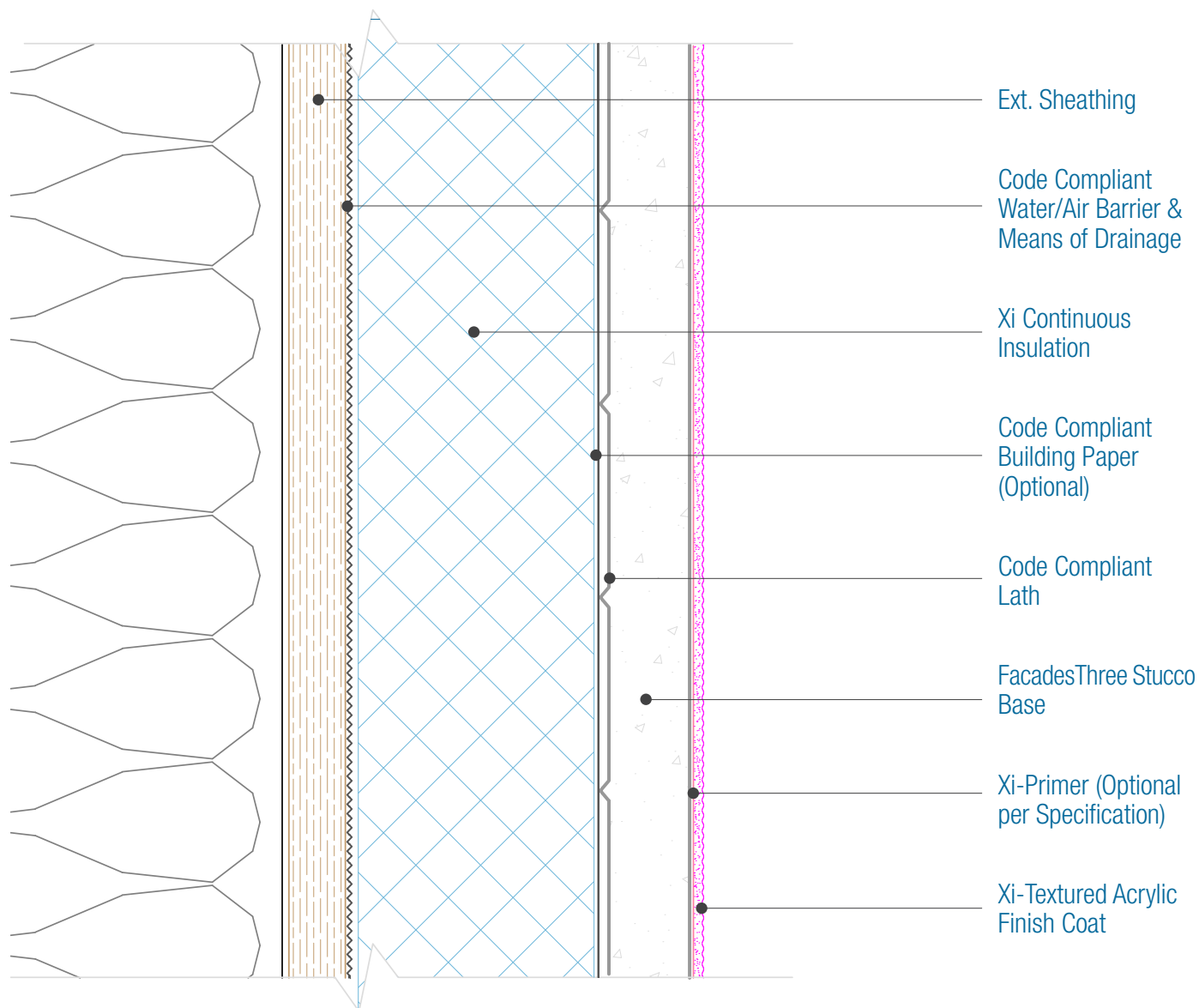
DISCLAIMER: FACADESXi details are recommendations that should be used for guidance only. There may be equivalent means of installation that are not shown in FACADESXi assembly details. All FACADESXi products shall be installed in accordance with FACADESXi product datasheets and all applicable building codes and industry standard practices. The design, engineering and final details incorporating any FACADESXi product are the sole responsibility of the project design professional. FACADESXi is not responsible for determining the acceptability and/or applicability of any FACADESXi product or detail for any specific project or condition. FACADESXi disclaims all liability for improper installation, workmanship, or design by a third-party. EXCEPT FOR ANY EXPRESS REPRESENTATIONS AND WARRANTIES BY FACADESXi, ALL IMPLIED WARRANTIES OF ANY KIND, INCLUDING BUT NOT LIMITED TO WARRANTIES OF MERCHANTABILITY OR FITNESS FOR A PARTICULAR PURPOSE OR COMPLIANCE WITH LAWS OR GOVERNMENT RULES OR REGULATIONS APPLICABLE TO THE PROJECT, ARE HEREBY DISCLAIMED. FACADESXi's website should always be consulted for the latest version of any details and/or product information. Contact FACADESXi for any technical assistance.



15262 Capital Port
San Antonio, TX 78249
1-800-611-6602
facadesxi.com

FacadesThree Xi-Series Assembly Assembly Overview

Date: 06-15-2020 | Detail. F3XI.I.2 v1



NOTES:

1. For full assembly options, materials and placement of materials refer to the specific FacadesXi System specifications.
2. See Detail I.3 for material options.

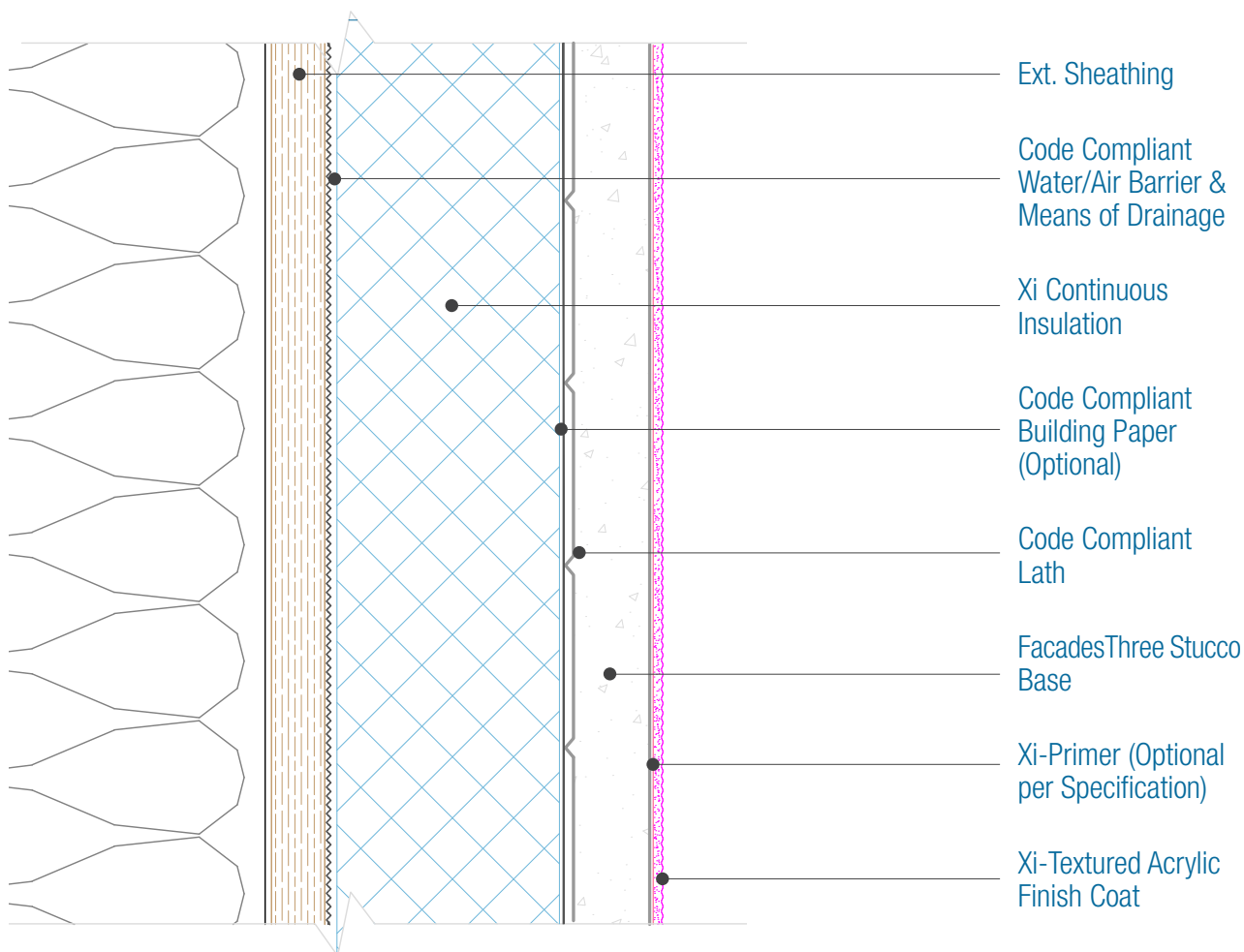
DISCLAIMER: FACADESXi details are recommendations that should be used for guidance only. There may be equivalent means of installation that are not shown in FACADESXi assembly details. All FACADESXi products shall be installed in accordance with FACADESXi product datasheets and all applicable building codes and industry standard practices. The design, engineering and final details incorporating any FACADESXi product are the sole responsibility of the project design professional. FACADESXi is not responsible for determining the acceptability and/or applicability of any FACADESXi product or detail for any specific project or condition. FACADESXi disclaims all liability for improper installation, workmanship, or design by a third-party. EXCEPT FOR ANY EXPRESS REPRESENTATIONS AND WARRANTIES BY FACADESXi, ALL IMPLIED WARRANTIES OF ANY KIND, INCLUDING BUT NOT LIMITED TO WARRANTIES OF MERCHANTABILITY OR FITNESS FOR A PARTICULAR PURPOSE OR COMPLIANCE WITH LAWS OR GOVERNMENT RULES OR REGULATIONS APPLICABLE TO THE PROJECT, ARE HEREBY DISCLAIMED. FACADESXi's website should always be consulted for the latest version of any details and/or product information. Contact FACADESXi for any technical assistance.



15262 Capital Port
San Antonio, TX 78249
1-800-611-6602
facadesxi.com

FacadesThree Xi-Series Assembly Assembly Overview

Date: 06-15-2020 | Detail: F3XI.I.3 v1



Framing

☐ Wood ☐ Metal

Xi Continuous Insulation

☐ EPS ☐ Polyiso
☐ XPS ☐ Other

Means of Drainage

☐ Drainage Insulation Board
☐ Tyvek Stuccowrap/Equal
☐ Drainage Mat

Sheathing

☐ OSB
☐ Plywood
☐ Cement Board
☐ Fiberglass Faced
☐ Gypsum

Xi-Textured Acrylic Finish Coat

☐ Smooth ☐ Fine ☐ Coarse

Primer (Optional per specification)

☐ Xi-Alkali Resistant Primer

Code Compliant Lath

☐ 2.5lb/yd² Expanded Metal Lath
☐ Woven Wire Lath
☐ Plastic Lath
☐ Per Specifications

FacadesTHREE Stucco Base

☐ FacadesThree Concentrate
☐ FacadesThree Sanded

Water / Air Barrier

☐ Code compliant by other Mfr

Code Compliant Building Paper

☐ By Others

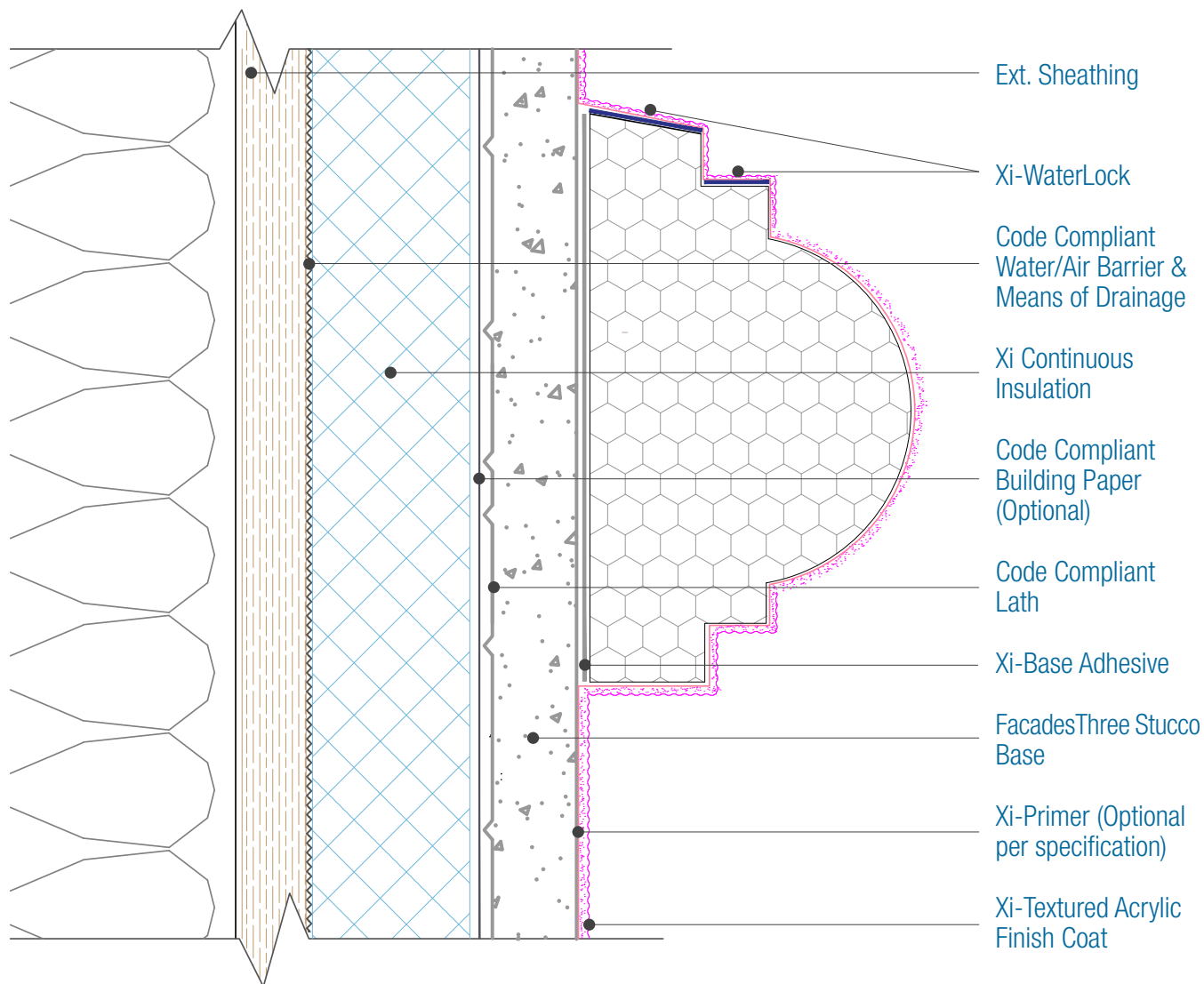
DISCLAIMER: FACADESXi details are recommendations that should be used for guidance only. There may be equivalent means of installation that are not shown in FACADESXi assembly details. All FACADESXi products shall be installed in accordance with FACADESXi product datasheets and all applicable building codes and industry standard practices. The design, engineering and final details incorporating any FACADESXi product are the sole responsibility of the project design professional. FACADESXi is not responsible for determining the acceptability and/or applicability of any FACADESXi product or detail for any specific project or condition. FACADESXi disclaims all liability for improper installation, workmanship, or design by a third-party. EXCEPT FOR ANY EXPRESS REPRESENTATIONS AND WARRANTIES BY FACADESXi, ALL IMPLIED WARRANTIES OF ANY KIND, INCLUDING BUT NOT LIMITED TO WARRANTIES OF MERCHANTABILITY OR FITNESS FOR A PARTICULAR PURPOSE OR COMPLIANCE WITH LAWS OR GOVERNMENT RULES OR REGULATIONS APPLICABLE TO THE PROJECT, ARE HEREBY DISCLAIMED. FACADESXi's website should always be consulted for the latest version of any details and/or product information. Contact FACADESXi for any technical assistance.



15262 Capital Port
San Antonio, TX 78249
1-800-611-6602
facadesxi.com

FacadesThree Xi-Series Assembly Foam Shape

Date: 06-15-2020 | Detail: F3XI.I.4 v1



NOTES:

1. For full assembly options, materials and placement of materials refer to the specific FacadesXi System specifications.
2. See Detail I.3 for material options.
3. Foam shape thickness for Non-combustible construction are limited to 4 inches in thickness.
4. Horizontal Sloped surfaces of foam shapes must be coated with FacadesXi-WaterLock.
5. Slope Minimums: Standing Snow areas - 6:12, No Standing Snow - 3:12

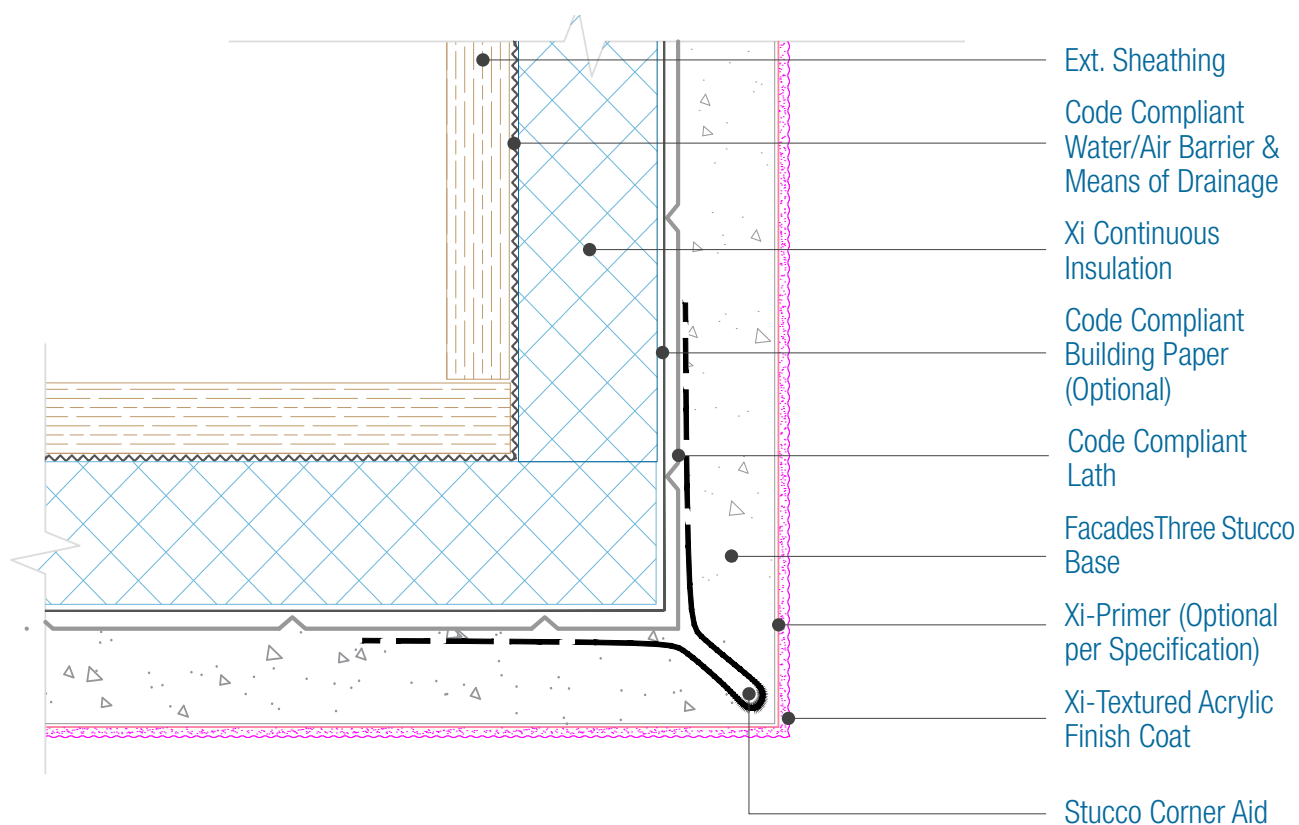
DISCLAIMER: FACADESXi details are recommendations that should be used for guidance only. There may be equivalent means of installation that are not shown in FACADESXi assembly details. All FACADESXi products shall be installed in accordance with FACADESXi product datasheets and all applicable building codes and industry standard practices. The design, engineering and final details incorporating any FACADESXi product are the sole responsibility of the project design professional. FACADESXi is not responsible for determining the acceptability and/or applicability of any FACADESXi product or detail for any specific project or condition. FACADESXi disclaims all liability for improper installation, workmanship, or design by a third-party. EXCEPT FOR ANY EXPRESS REPRESENTATIONS AND WARRANTIES BY FACADESXi, ALL IMPLIED WARRANTIES OF ANY KIND, INCLUDING BUT NOT LIMITED TO WARRANTIES OF MERCHANTABILITY OR FITNESS FOR A PARTICULAR PURPOSE OR COMPLIANCE WITH LAWS OR GOVERNMENT RULES OR REGULATIONS APPLICABLE TO THE PROJECT, ARE HEREBY DISCLAIMED. FACADESXi's website should always be consulted for the latest version of any details and/or product information. Contact FACADESXi for any technical assistance.



15262 Capital Port
San Antonio, TX 78249
1-800-611-6602
facadesxi.com

FacadesThree Xi-Series Assembly Outside Corner

Date: 06-15-2020 | Detail: F3XI.I.5 v1



NOTES:

1. For full assembly options, materials and placement of materials refer to the specific FacadesXi System specifications.
2. See Detail I.3 for material options.

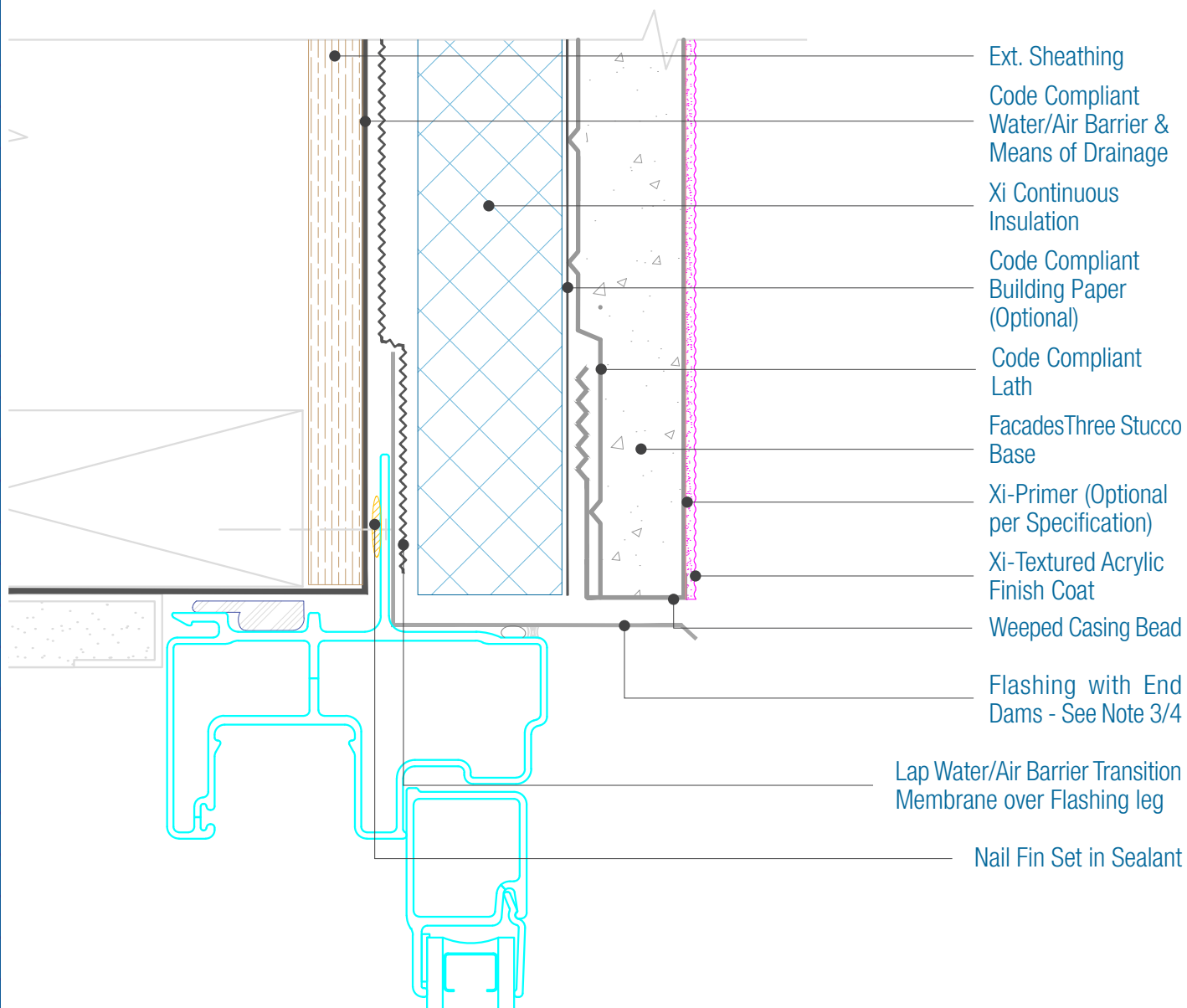
DISCLAIMER: FACADESXi details are recommendations that should be used for guidance only. There may be equivalent means of installation that are not shown in FACADESXi assembly details. All FACADESXi products shall be installed in accordance with FACADESXi product datasheets and all applicable building codes and industry standard practices. The design, engineering and final details incorporating any FACADESXi product are the sole responsibility of the project design professional. FACADESXi is not responsible for determining the acceptability and/or applicability of any FACADESXi product or detail for any specific project or condition. FACADESXi disclaims all liability for improper installation, workmanship, or design by a third-party. EXCEPT FOR ANY EXPRESS REPRESENTATIONS AND WARRANTIES BY FACADESXi, ALL IMPLIED WARRANTIES OF ANY KIND, INCLUDING BUT NOT LIMITED TO WARRANTIES OF MERCHANTABILITY OR FITNESS FOR A PARTICULAR PURPOSE OR COMPLIANCE WITH LAWS OR GOVERNMENT RULES OR REGULATIONS APPLICABLE TO THE PROJECT, ARE HEREBY DISCLAIMED. FACADESXi's website should always be consulted for the latest version of any details and/or product information. Contact FACADESXi for any technical assistance.



15262 Capital Port
San Antonio, TX 78249
1-800-611-6602
facadesxi.com

FacadesThree Xi-Series Assembly Nail Fin Window Head

Date: 06-15-2020 | Detail: F3XI.II.1 v1



NOTES:

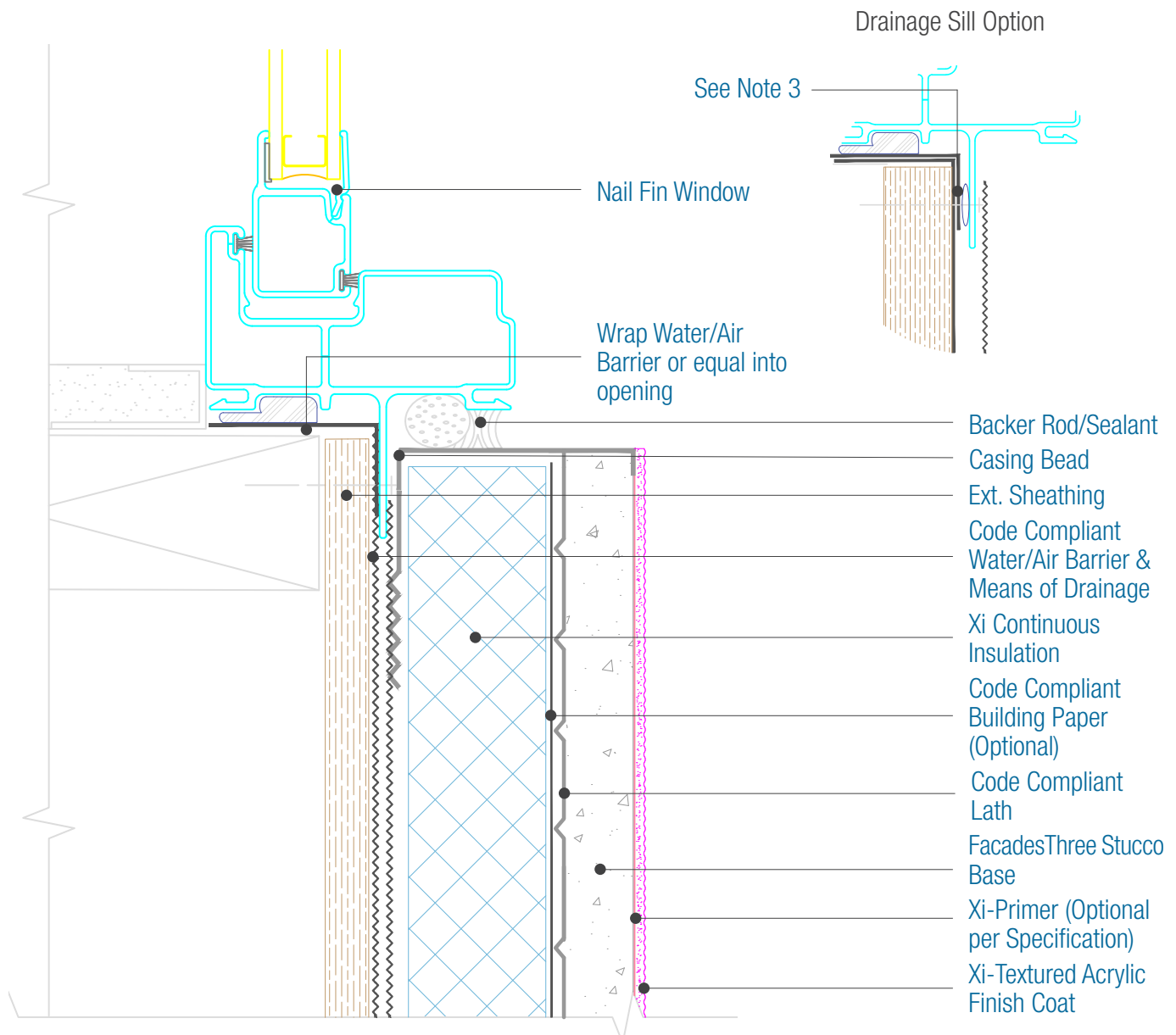
1. Attach penetrations to structural member.
2. Provide Air Tight seals at all penetrations.
3. Responsibility of the flashing is not necessarily that of the plastering contractor and should be denoted in the contract documents.
4. Flashing must be installed with End Dams and be completely watertight
5. For full assembly options, materials and placement of materials refer to the specific FacadesXi System specifications.
6. See Detail I.3 for material options.

DISCLAIMER: FACADESXi details are recommendations that should be used for guidance only. There may be equivalent means of installation that are not shown in FACADESXi assembly details. All FACADESXi products shall be installed in accordance with FACADESXi product datasheets and all applicable building codes and industry standard practices. The design, engineering and final details incorporating any FACADESXi product are the sole responsibility of the project design professional. FACADESXi is not responsible for determining the acceptability and/or applicability of any FACADESXi product or detail for any specific project or condition. FACADESXi disclaims all liability for improper installation, workmanship, or design by a third-party. EXCEPT FOR ANY EXPRESS REPRESENTATIONS AND WARRANTIES BY FACADESXi, ALL IMPLIED WARRANTIES OF ANY KIND, INCLUDING BUT NOT LIMITED TO WARRANTIES OF MERCHANTABILITY OR FITNESS FOR A PARTICULAR PURPOSE OR COMPLIANCE WITH LAWS OR GOVERNMENT RULES OR REGULATIONS APPLICABLE TO THE PROJECT, ARE HEREBY DISCLAIMED. FACADESXi's website should always be consulted for the latest version of any details and/or product information. Contact FACADESXi for any technical assistance.



15262 Capital Port
San Antonio, TX 78249
1-800-611-6602
facadesxi.com

Date: 06-15-2020 | Detail: F3XI.II.2 v1



NOTES:

1. There must be continuous airtightness over the entire building enclosure, where required by code. The actual project detail must show this continuity.
2. Provide Air Tight seals at all perimeter of window for an airtight seal.
3. At Sill, for a window that will drain behind the fin, spacers should be installed to accommodate drainage and not sealed, use Drainage Sill Option.
4. For Rough Opening Protection and options see Water/Air Barrier Manufacturers installation instructions
5. For full assembly options, materials and placement of materials refer to the specific FacadesXi System specifications.
6. See Detail I.3 for material options.

DISCLAIMER: FACADESXI details are recommendations that should be used for guidance only. There may be equivalent means of installation that are not shown in FACADESXI assembly details. All FACADESXI products shall be installed in accordance with FACADESXI product datasheets and all applicable building codes and industry standard practices. The design, engineering and final details incorporating any FACADESXI product are the sole responsibility of the project design professional. FACADESXI is not responsible for determining the acceptability and/or applicability of any FACADESXI product or detail for any specific project or condition. FACADESXI disclaims all liability for improper installation, workmanship, or design by a third-party. EXCEPT FOR ANY EXPRESS REPRESENTATIONS AND WARRANTIES BY FACADESXI, ALL IMPLIED WARRANTIES OF ANY KIND, INCLUDING BUT NOT LIMITED TO WARRANTIES OF MERCHANTABILITY OR FITNESS FOR A PARTICULAR PURPOSE OR COMPLIANCE WITH LAWS OR GOVERNMENT RULES OR REGULATIONS APPLICABLE TO THE PROJECT, ARE HEREBY DISCLAIMED. FACADESXI's website should always be consulted for the latest version of any details and/or product information. Contact FACADESXI for any technical assistance.



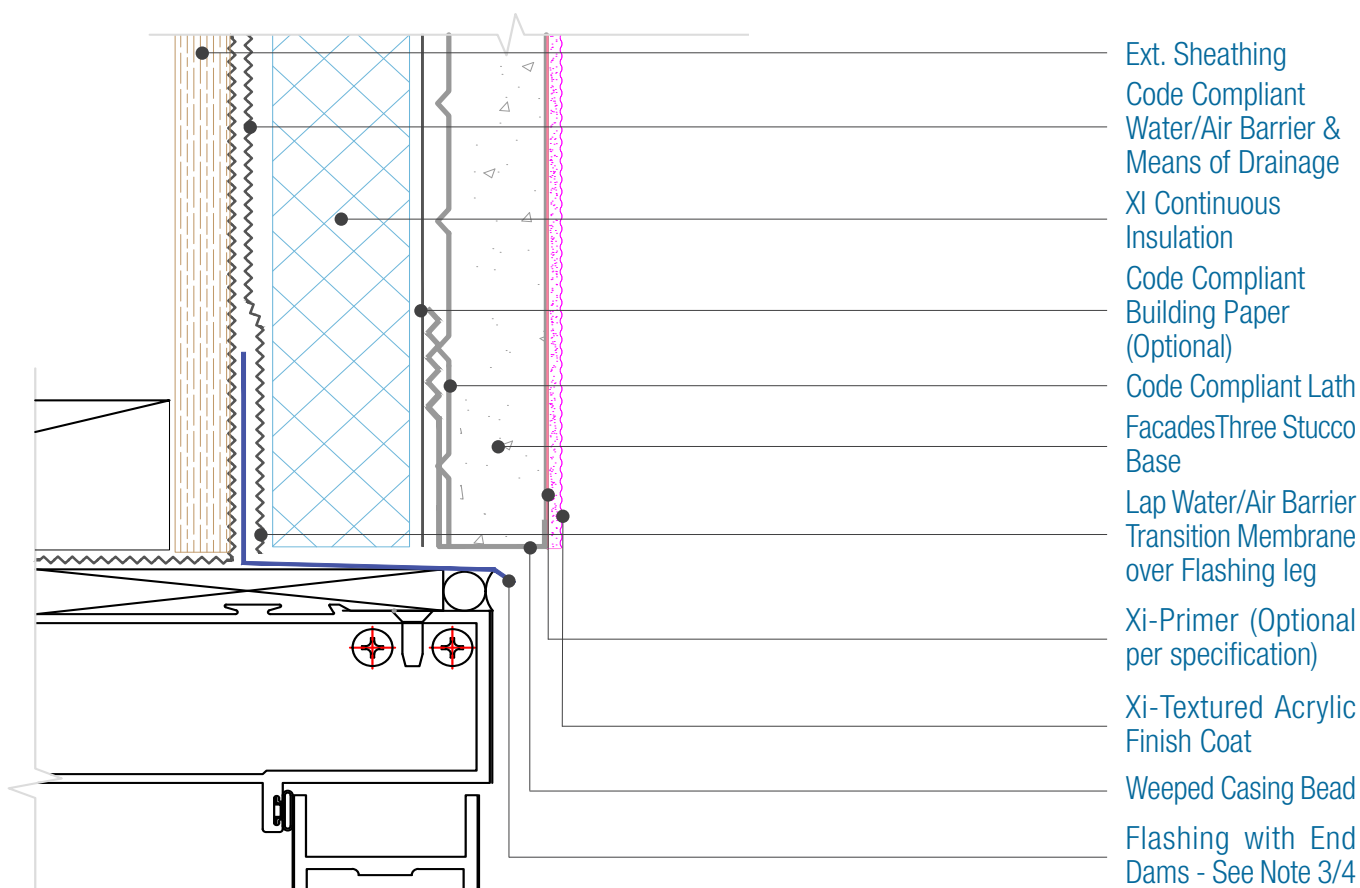
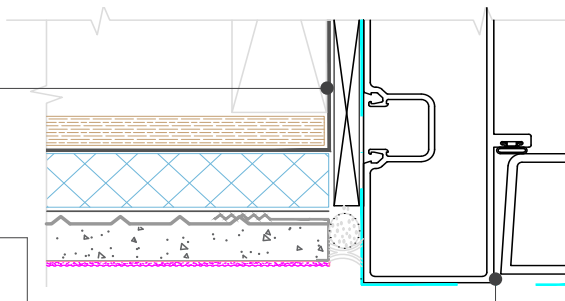
15262 Capital Port
San Antonio, TX 78249
1-800-611-6602
facadesxi.com

FacadesThree Xi-Series Assembly Storefront Window Head and Jamb

Date: 06-15-2020 | Detail.F3XI.II.3 v1

Wrap Water/Air
Barrier into opening

Sill Pan Below
See Note 3



NOTES:

1. Provide Air Tight seals at all perimeter of opening for an airtight seal.
2. For Rough Opening Protection and options see Water/Air Barrier Manufacturers installation
3. The Door must be set in a pan flashing and rough opening protection wrapped into that pan flashing.
4. Responsibility of the flashing is not necessarily that of the plastering contractor and should be denoted in the contract documents.
5. Flashing must be installed with End Dams and be completely watertight
6. For full assembly options, materials and placement of materials refer to the specific FacadesXi System specifications.
7. See Detail I.3 for material options.

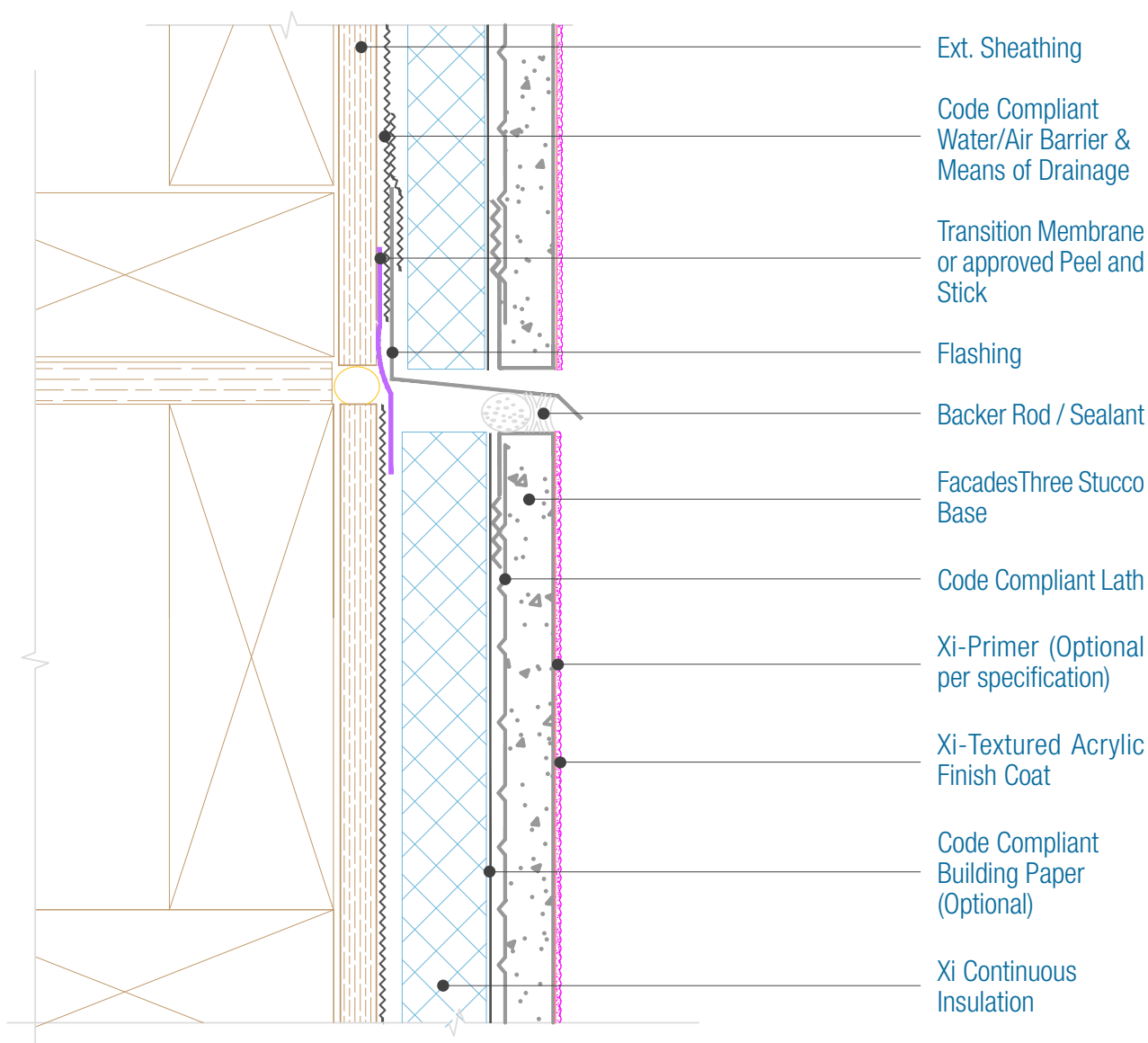
DISCLAIMER: FACADESXI details are recommendations that should be used for guidance only. There may be equivalent means of installation that are not shown in FACADESXI assembly details. All FACADESXI products shall be installed in accordance with FACADESXI product datasheets and all applicable building codes and industry standard practices. The design, engineering and final details incorporating any FACADESXI product are the sole responsibility of the project design professional. FACADESXI is not responsible for determining the acceptability and/or applicability of any FACADESXI product or detail for any specific project or condition. FACADESXI disclaims all liability for improper installation, workmanship, or design by a third-party. EXCEPT FOR ANY EXPRESS REPRESENTATIONS AND WARRANTIES BY FACADESXI, ALL IMPLIED WARRANTIES OF ANY KIND, INCLUDING BUT NOT LIMITED TO WARRANTIES OF MERCHANTABILITY OR FITNESS FOR A PARTICULAR PURPOSE OR COMPLIANCE WITH LAWS OR GOVERNMENT RULES OR REGULATIONS APPLICABLE TO THE PROJECT, ARE HEREBY DISCLAIMED. FACADESXI's website should always be consulted for the latest version of any details and/or product information. Contact FACADESXI for any technical assistance.



15262 Capital Port
San Antonio, TX 78249
1-800-611-6602
facadesxi.com

FacadesThree Xi-Series Assembly Expansion Joint

Date. 06-15-2020 | Detail.F3XI.III.1 v1



NOTES:

1. There must be continuous airtightness over the entire building enclosure, where required by code. The actual project detail must show this continuity.
2. Attach penetrations to structural member.
3. Responsibility of the flashing is not necessarily that of the plastering contractor and should be denoted in the contract documents.
4. Flashing must be installed with End Dams and be completely watertight.
5. For full assembly options, materials and placement of materials refer to the specific FacadesXi System specifications.
6. See Detail 1.3 for material options.

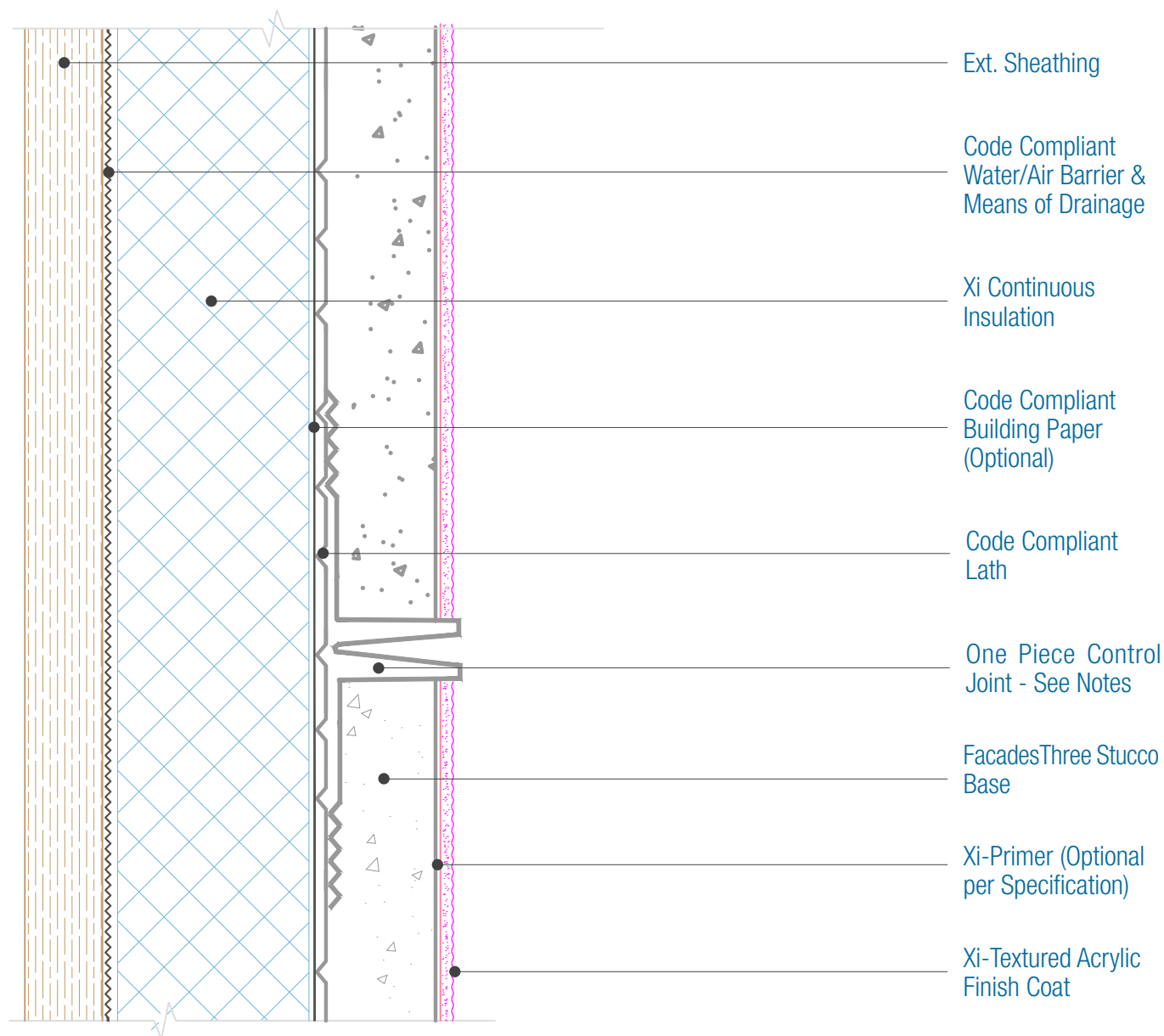
DISCLAIMER: FACADESXi details are recommendations that should be used for guidance only. There may be equivalent means of installation that are not shown in FACADESXi assembly details. All FACADESXi products shall be installed in accordance with FACADESXi product datasheets and all applicable building codes and industry standard practices. The design, engineering and final details incorporating any FACADESXi product are the sole responsibility of the project design professional. FACADESXi is not responsible for determining the acceptability and/or applicability of any FACADESXi product or detail for any specific project or condition. FACADESXi disclaims all liability for improper installation, workmanship, or design by a third-party. EXCEPT FOR ANY EXPRESS REPRESENTATIONS AND WARRANTIES BY FACADESXi, ALL IMPLIED WARRANTIES OF ANY KIND, INCLUDING BUT NOT LIMITED TO WARRANTIES OF MERCHANTABILITY OR FITNESS FOR A PARTICULAR PURPOSE OR COMPLIANCE WITH LAWS OR GOVERNMENT RULES OR REGULATIONS APPLICABLE TO THE PROJECT, ARE HEREBY DISCLAIMED. FACADESXi's website should always be consulted for the latest version of any details and/or product information. Contact FACADESXi for any technical assistance.



15262 Capital Port
San Antonio, TX 78249
1-800-611-6602
facadesxi.com

FacadesThree Xi-Series Assembly Control Joint

Date: 06-15-2020 | Detail.F3FXI.III.2 v1



NOTES:

1. There must be continuous airtightness over the entire building enclosure, where required by code. The actual project detail must show this continuity.
2. The Lath is shown continuous behind the control joint. This is allowed by FacadesXi however the decision is that of the designer and the building code official. See specifications for more information.
3. The Control joint may also be 2 Casing Beads back to back with a sealant joint, however the framing must be installed to allow the attachment of both casing beads to a structural member.
4. For full assembly options, materials and placement of materials refer to the specific FacadesXi System specifications.
5. See Detail I.3 for material options.

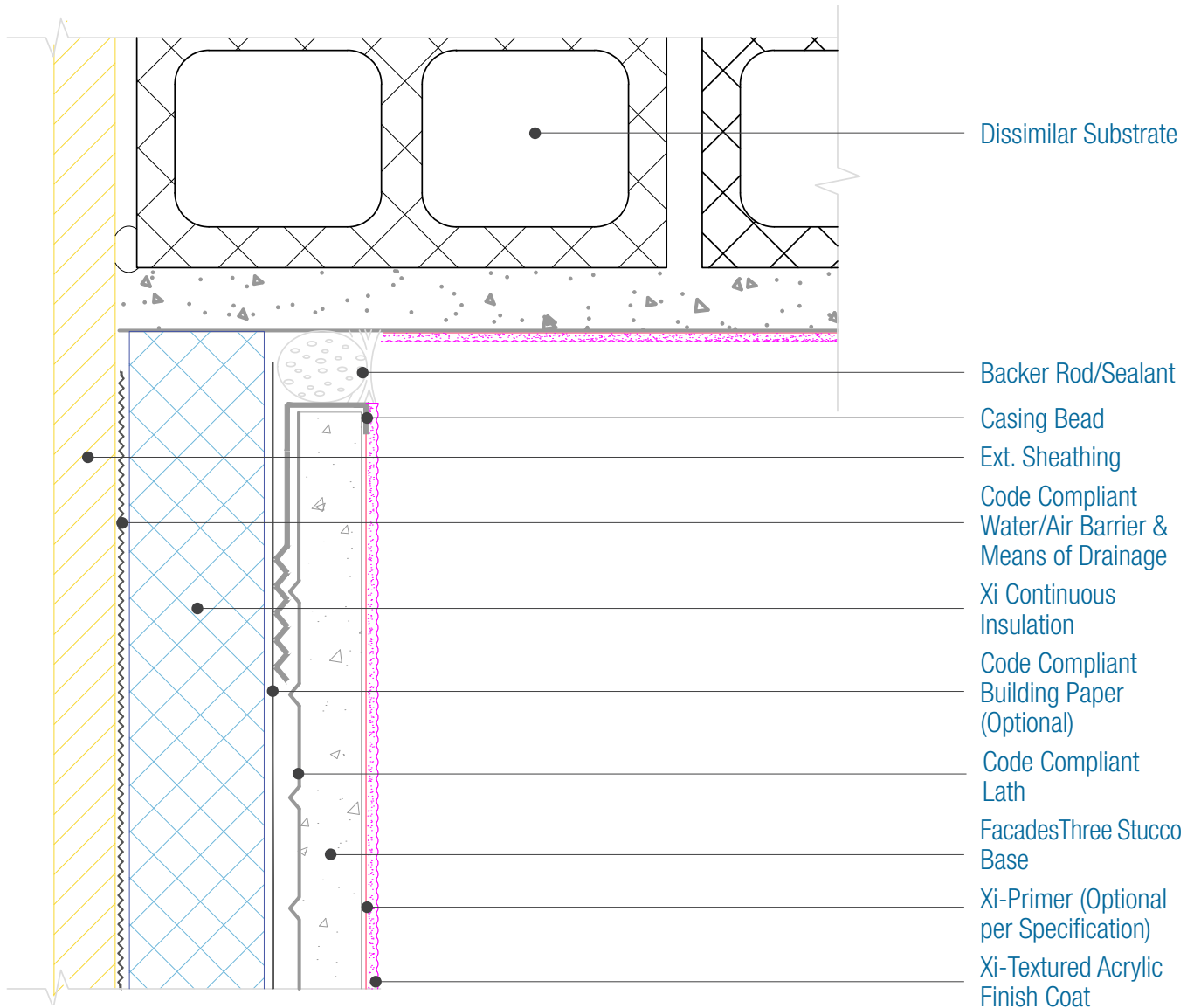
DISCLAIMER: FACADESXi details are recommendations that should be used for guidance only. There may be equivalent means of installation that are not shown in FACADESXi assembly details. All FACADESXi products shall be installed in accordance with FACADESXi product datasheets and all applicable building codes and industry standard practices. The design, engineering and final details incorporating any FACADESXi product are the sole responsibility of the project design professional. FACADESXi is not responsible for determining the acceptability and/or applicability of any FACADESXi product or detail for any specific project or condition. FACADESXi disclaims all liability for improper installation, workmanship, or design by a third-party. EXCEPT FOR ANY EXPRESS REPRESENTATIONS AND WARRANTIES BY FACADESXi, ALL IMPLIED WARRANTIES OF ANY KIND, INCLUDING BUT NOT LIMITED TO WARRANTIES OF MERCHANTABILITY OR FITNESS FOR A PARTICULAR PURPOSE OR COMPLIANCE WITH LAWS OR GOVERNMENT RULES OR REGULATIONS APPLICABLE TO THE PROJECT, ARE HEREBY DISCLAIMED. FACADESXi's website should always be consulted for the latest version of any details and/or product information. Contact FACADESXi for any technical assistance.



15262 Capital Port
San Antonio, TX 78249
1-800-611-6602
facadesxi.com

FacadesThree Xi-Series Assembly Inside Corner Joint

Date: 06-15-2020 | Detail: F3XI.III.3 V1



NOTES:

1. There must be continuous airtightness over the entire building enclosure, where required by code. The actual project detail must show this continuity.
2. For full assembly options, materials and placement of materials refer to the specific FacadesXi System specifications.
3. See Detail I.3 for material options.

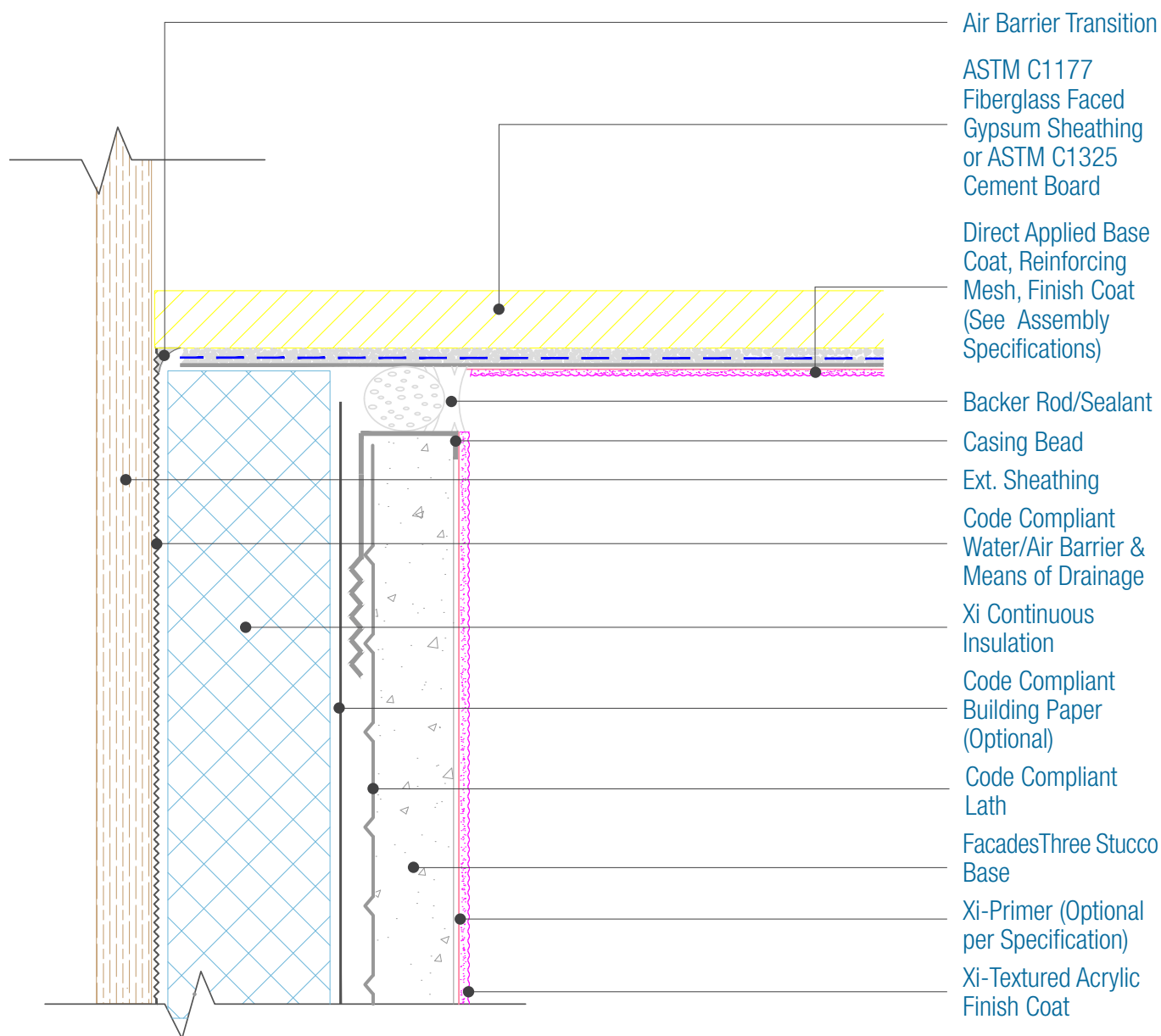
DISCLAIMER: FACADESXi details are recommendations that should be used for guidance only. There may be equivalent means of installation that are not shown in FACADESXi assembly details. All FACADESXi products shall be installed in accordance with FACADESXi product datasheets and all applicable building codes and industry standard practices. The design, engineering and final details incorporating any FACADESXi product are the sole responsibility of the project design professional. FACADESXi is not responsible for determining the acceptability and/or applicability of any FACADESXi product or detail for any specific project or condition. FACADESXi disclaims all liability for improper installation, workmanship, or design by a third-party. EXCEPT FOR ANY EXPRESS REPRESENTATIONS AND WARRANTIES BY FACADESXi, ALL IMPLIED WARRANTIES OF ANY KIND, INCLUDING BUT NOT LIMITED TO WARRANTIES OF MERCHANTABILITY OR FITNESS FOR A PARTICULAR PURPOSE OR COMPLIANCE WITH LAWS OR GOVERNMENT RULES OR REGULATIONS APPLICABLE TO THE PROJECT, ARE HEREBY DISCLAIMED. FACADESXi's website should always be consulted for the latest version of any details and/or product information. Contact FACADESXi for any technical assistance.



15262 Capital Port
San Antonio, TX 78249
1-800-611-6602
facadesxi.com

FacadesThree Xi-Series Assembly Termination into Direct Applied Soffit

Date: 06-15-2020 | Detail: F3XI.IV.1 v1



NOTES:

1. There must be continuous airtightness over the entire building enclosure, where required by code. The actual project detail must show this continuity.
2. For full assembly options, materials and placement of materials refer to the specific FacadesXi System specifications.
3. See Detail I.3 for material options.

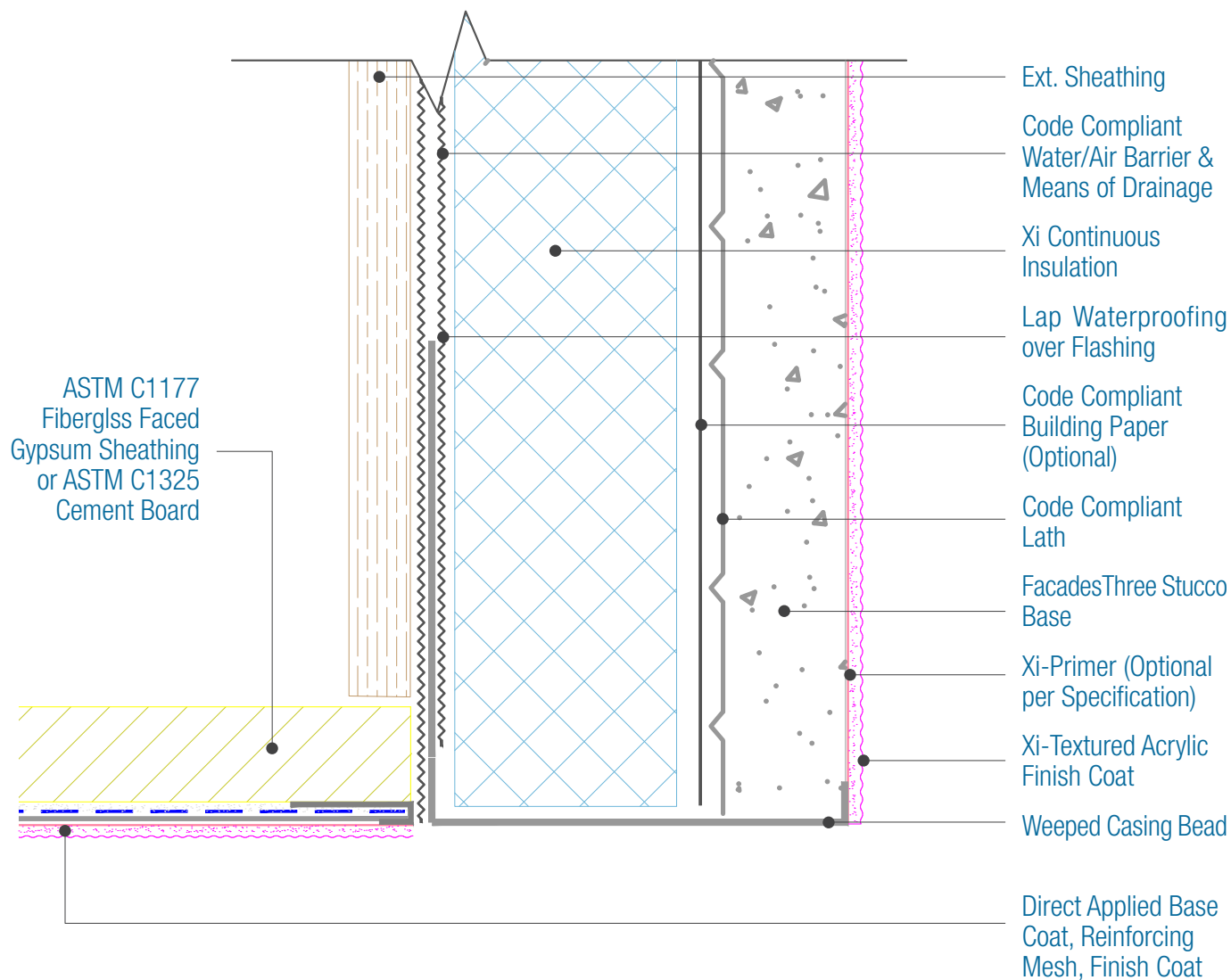
DISCLAIMER: FACADESXI details are recommendations that should be used for guidance only. There may be equivalent means of installation that are not shown in FACADESXI assembly details. All FACADESXI products shall be installed in accordance with FACADESXI product datasheets and all applicable building codes and industry standard practices. The design, engineering and final details incorporating any FACADESXI product are the sole responsibility of the project design professional. FACADESXI is not responsible for determining the acceptability and/or applicability of any FACADESXI product or detail for any specific project or condition. FACADESXI disclaims all liability for improper installation, workmanship, or design by a third-party. EXCEPT FOR ANY EXPRESS REPRESENTATIONS AND WARRANTIES BY FACADESXI, ALL IMPLIED WARRANTIES OF ANY KIND, INCLUDING BUT NOT LIMITED TO WARRANTIES OF MERCHANTABILITY OR FITNESS FOR A PARTICULAR PURPOSE OR COMPLIANCE WITH LAWS OR GOVERNMENT RULES OR REGULATIONS APPLICABLE TO THE PROJECT, ARE HEREBY DISCLAIMED. FACADESXI's website should always be consulted for the latest version of any details and/or product information. Contact FACADESXI for any technical assistance.



15262 Capital Port
San Antonio, TX 78249
1-800-611-6602
facadesxi.com

FacadesThree Xi-Series Assembly Fascia Transition to Direct Applied Soffit

Date: 06-15-2020 | Detail: F3XI.IV.2 v1



NOTES:

1. There must be continuous airtightness over the entire building enclosure, where required by code. The actual project detail must show this continuity.
2. The Fascia can drain either by wrapping the Water/Air Barrier or Transition Membrane into the Weeped Track or by draining between the Fascia and the Soffit PVC Accessories.
3. For full assembly options, materials and placement of materials refer to the specific FacadesXi System specifications.
4. See Detail I.3 for material options.

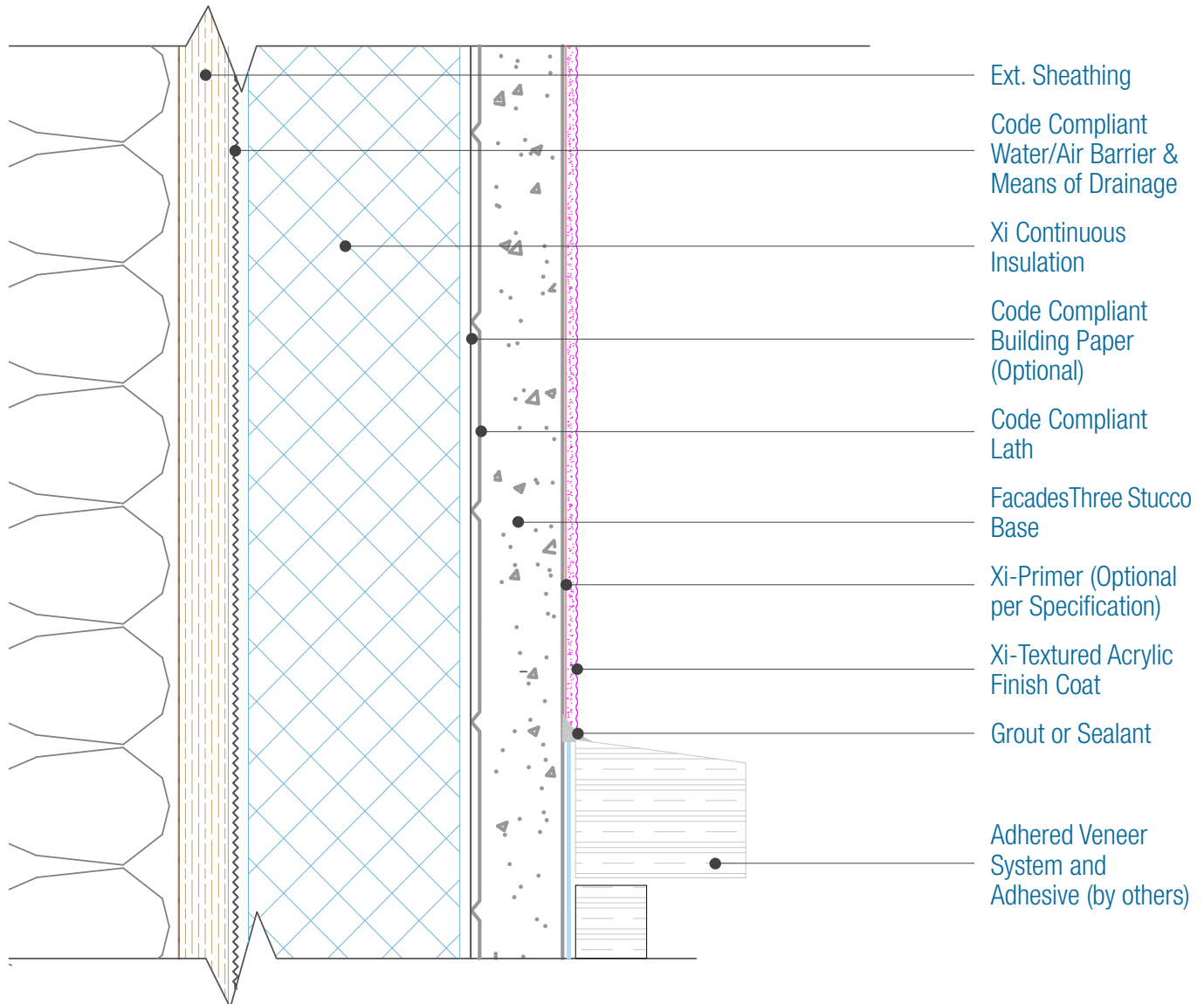
DISCLAIMER: FACADESXi details are recommendations that should be used for guidance only. There may be equivalent means of installation that are not shown in FACADESXi assembly details. All FACADESXi products shall be installed in accordance with FACADESXi product datasheets and all applicable building codes and industry standard practices. The design, engineering and final details incorporating any FACADESXi product are the sole responsibility of the project design professional. FACADESXi is not responsible for determining the acceptability and/or applicability of any FACADESXi product or detail for any specific project or condition. FACADESXi disclaims all liability for improper installation, workmanship, or design by a third-party. EXCEPT FOR ANY EXPRESS REPRESENTATIONS AND WARRANTIES BY FACADESXi, ALL IMPLIED WARRANTIES OF ANY KIND, INCLUDING BUT NOT LIMITED TO WARRANTIES OF MERCHANTABILITY OR FITNESS FOR A PARTICULAR PURPOSE OR COMPLIANCE WITH LAWS OR GOVERNMENT RULES OR REGULATIONS APPLICABLE TO THE PROJECT, ARE HEREBY DISCLAIMED. FACADESXi's website should always be consulted for the latest version of any details and/or product information. Contact FACADESXi for any technical assistance.



15262 Capital Port
San Antonio, TX 78249
1-800-611-6602
facadesxi.com

FacadesThree Xi-Series Assembly Transition to Adhered Veneer

Date. 06-15-2020 | Detail. F3XI.IV.3 v1



NOTES:

1. For full assembly options, materials and placement of materials refer to the specific FacadesXi System specifications.
2. See Detail I.3 for material options.

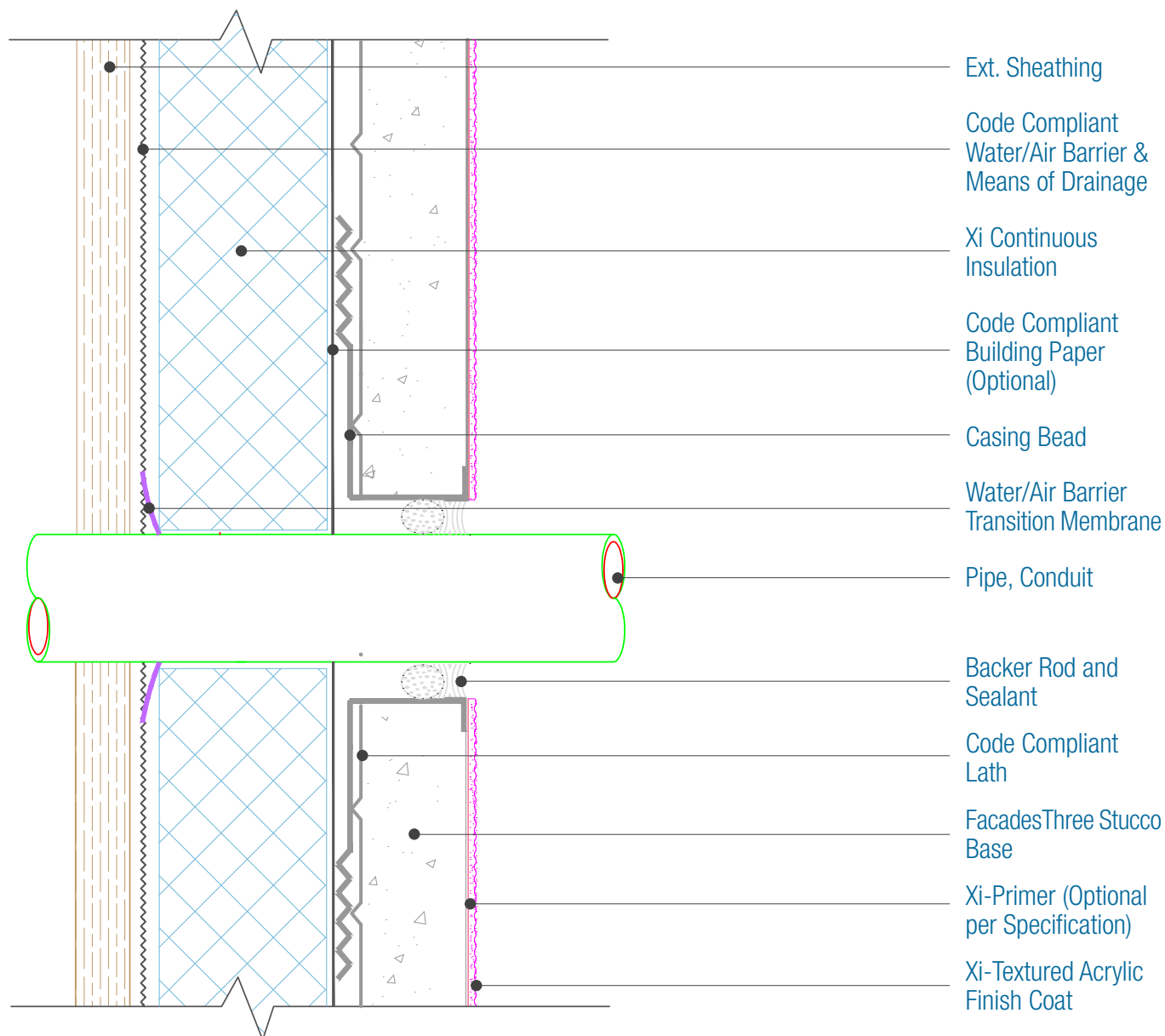
DISCLAIMER: FACADESXi details are recommendations that should be used for guidance only. There may be equivalent means of installation that are not shown in FACADESXi assembly details. All FACADESXi products shall be installed in accordance with FACADESXi product datasheets and all applicable building codes and industry standard practices. The design, engineering and final details incorporating any FACADESXi product are the sole responsibility of the project design professional. FACADESXi is not responsible for determining the acceptability and/or applicability of any FACADESXi product or detail for any specific project or condition. FACADESXi disclaims all liability for improper installation, workmanship, or design by a third-party. EXCEPT FOR ANY EXPRESS REPRESENTATIONS AND WARRANTIES BY FACADESXi, ALL IMPLIED WARRANTIES OF ANY KIND, INCLUDING BUT NOT LIMITED TO WARRANTIES OF MERCHANTABILITY OR FITNESS FOR A PARTICULAR PURPOSE OR COMPLIANCE WITH LAWS OR GOVERNMENT RULES OR REGULATIONS APPLICABLE TO THE PROJECT, ARE HEREBY DISCLAIMED. FACADESXi's website should always be consulted for the latest version of any details and/or product information. Contact FACADESXi for any technical assistance.



15262 Capital Port
San Antonio, TX 78249
1-800-611-6602
facadesxi.com

FacadesThree Xi-Series Assembly Pipe/Conduit Penetration

Date: 06-15-2020 | Detail: F3XI.V.1 v1



NOTES:

1. For full assembly options, materials and placement of materials refer to the specific FacadesXi System specifications.
2. See Detail I.3 for material options.
3. Pipe should be installed prior to the Cladding and the Water /air barrier transition membrane wrapped onto the pipe to create a water/air tight seal.
4. See Specification for Water/Air Barrier Transition Membrane Options.

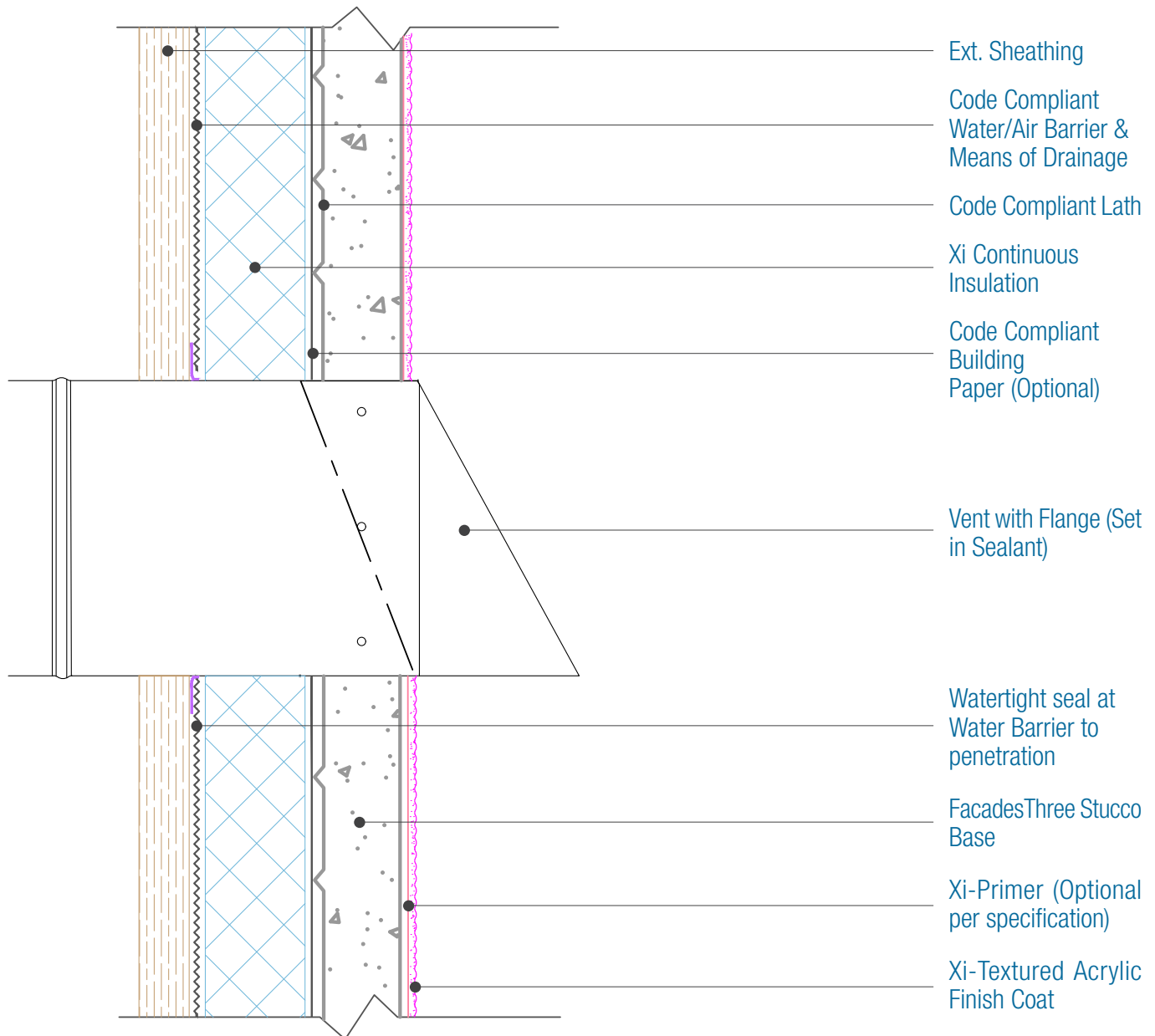
DISCLAIMER: FACADESXi details are recommendations that should be used for guidance only. There may be equivalent means of installation that are not shown in FACADESXi assembly details. All FACADESXi products shall be installed in accordance with FACADESXi product datasheets and all applicable building codes and industry standard practices. The design, engineering and final details incorporating any FACADESXi product are the sole responsibility of the project design professional. FACADESXi is not responsible for determining the acceptability and/or applicability of any FACADESXi product or detail for any specific project or condition. FACADESXi disclaims all liability for improper installation, workmanship, or design by a third-party. EXCEPT FOR ANY EXPRESS REPRESENTATIONS AND WARRANTIES BY FACADESXi, ALL IMPLIED WARRANTIES OF ANY KIND, INCLUDING BUT NOT LIMITED TO WARRANTIES OF MERCHANTABILITY OR FITNESS FOR A PARTICULAR PURPOSE OR COMPLIANCE WITH LAWS OR GOVERNMENT RULES OR REGULATIONS APPLICABLE TO THE PROJECT, ARE HEREBY DISCLAIMED. FACADESXi's website should always be consulted for the latest version of any details and/or product information. Contact FACADESXi for any technical assistance.



15262 Capital Port
San Antonio, TX 78249
1-800-611-6602
facadesxi.com

FacadesThree Xi-Series Assembly Vent Attachment

Date. 06-15-2020 | Detail. F3XI.V.2 v1



NOTES:

1. For full assembly options, materials and placement of materials refer to the specific FacadesXi System specifications.
2. See Detail I.3 for material options.
3. Attach penetrations to structural member and ensure the penetration is watertight.

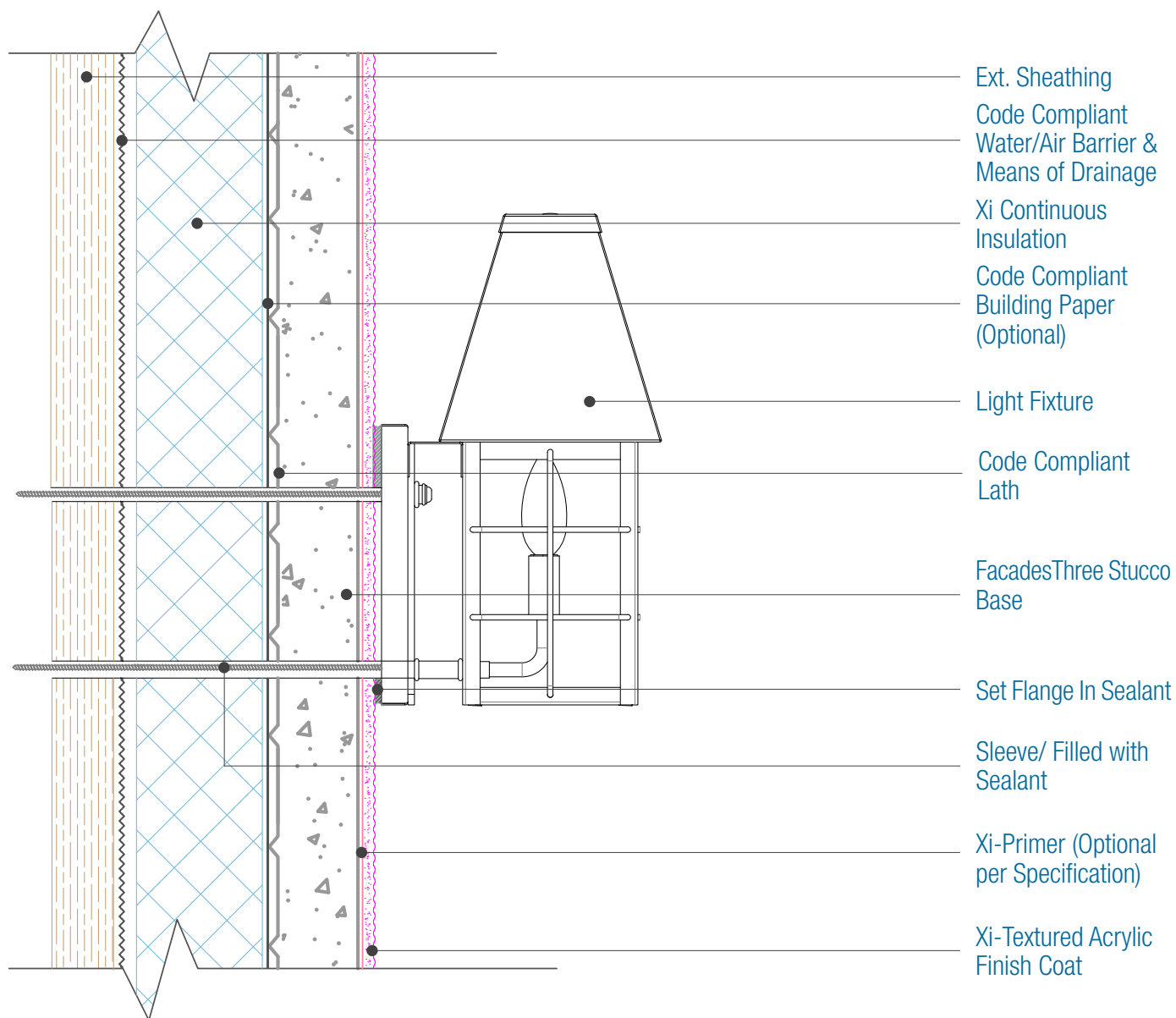
DISCLAIMER: FACADESXi details are recommendations that should be used for guidance only. There may be equivalent means of installation that are not shown in FACADESXi assembly details. All FACADESXi products shall be installed in accordance with FACADESXi product datasheets and all applicable building codes and industry standard practices. The design, engineering and final details incorporating any FACADESXi product are the sole responsibility of the project design professional. FACADESXi is not responsible for determining the acceptability and/or applicability of any FACADESXi product or detail for any specific project or condition. FACADESXi disclaims all liability for improper installation, workmanship, or design by a third-party. EXCEPT FOR ANY EXPRESS REPRESENTATIONS AND WARRANTIES BY FACADESXi, ALL IMPLIED WARRANTIES OF ANY KIND, INCLUDING BUT NOT LIMITED TO WARRANTIES OF MERCHANTABILITY OR FITNESS FOR A PARTICULAR PURPOSE OR COMPLIANCE WITH LAWS OR GOVERNMENT RULES OR REGULATIONS APPLICABLE TO THE PROJECT, ARE HEREBY DISCLAIMED. FACADESXi's website should always be consulted for the latest version of any details and/or product information. Contact FACADESXi for any technical assistance.



15262 Capital Port
San Antonio, TX 78249
1-800-611-6602
facadesxi.com

FacadesThree Xi-Series Assembly Fixture Attachment

Date. 06-15-2020 | Detail. F3XI.V.3 v1



NOTES:

1. For full assembly options, materials and placement of materials refer to the specific FacadesXi System specifications.
2. See Detail I.3 for material options.
3. Attach penetrations to structural member.

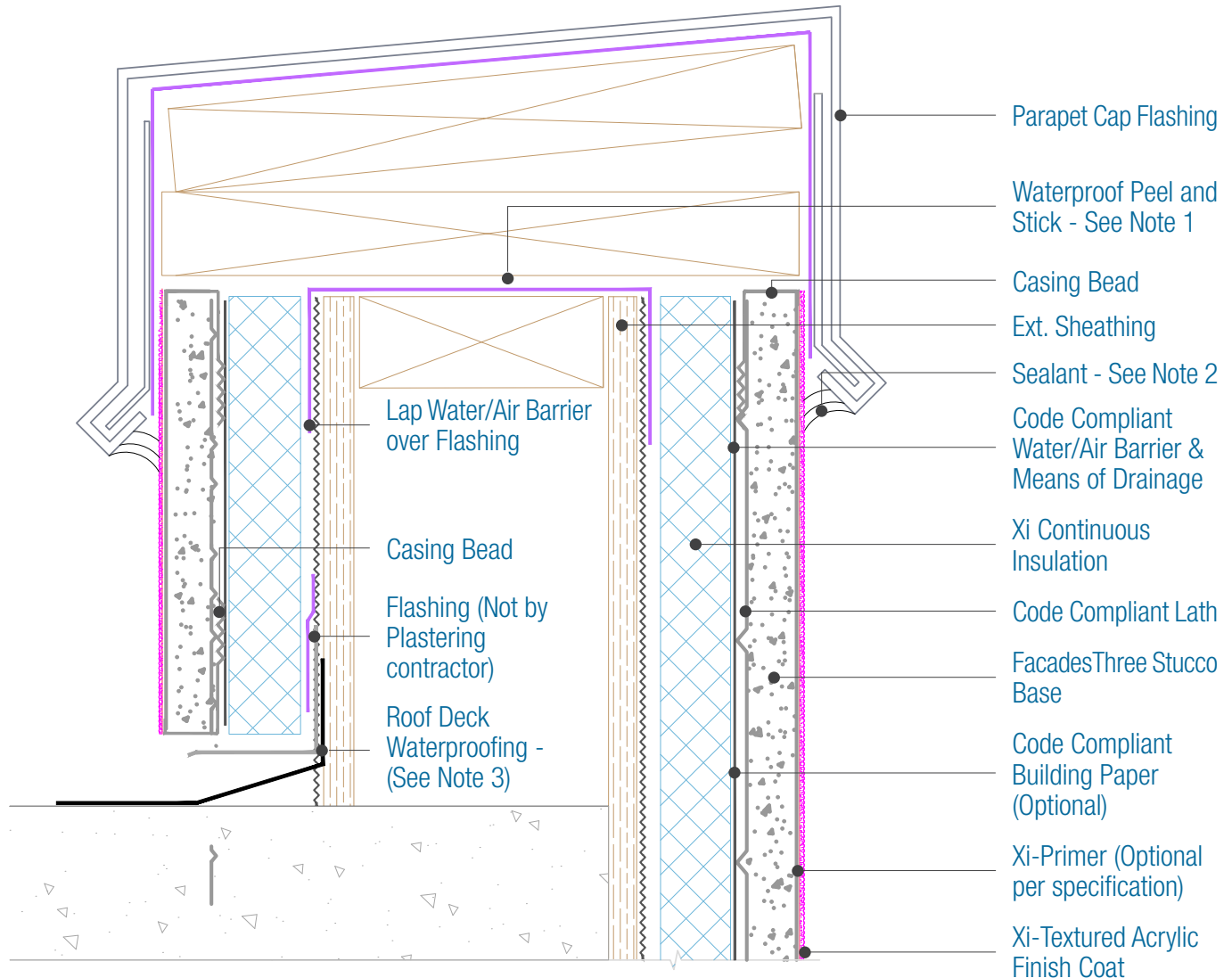
DISCLAIMER: FACADESXi details are recommendations that should be used for guidance only. There may be equivalent means of installation that are not shown in FACADESXi assembly details. All FACADESXi products shall be installed in accordance with FACADESXi product datasheets and all applicable building codes and industry standard practices. The design, engineering and final details incorporating any FACADESXi product are the sole responsibility of the project design professional. FACADESXi is not responsible for determining the acceptability and/or applicability of any FACADESXi product or detail for any specific project or condition. FACADESXi disclaims all liability for improper installation, workmanship, or design by a third-party. EXCEPT FOR ANY EXPRESS REPRESENTATIONS AND WARRANTIES BY FACADESXi, ALL IMPLIED WARRANTIES OF ANY KIND, INCLUDING BUT NOT LIMITED TO WARRANTIES OF MERCHANTABILITY OR FITNESS FOR A PARTICULAR PURPOSE OR COMPLIANCE WITH LAWS OR GOVERNMENT RULES OR REGULATIONS APPLICABLE TO THE PROJECT, ARE HEREBY DISCLAIMED. FACADESXi's website should always be consulted for the latest version of any details and/or product information. Contact FACADESXi for any technical assistance.



15262 Capital Port
San Antonio, TX 78249
1-800-611-6602
facadesxi.com

FacadesThree Xi-Series Assembly Parapet

Date: 06-15-2020 | Detail: F3XI.VI.1 v1



NOTES:

1. For full assembly options, materials and placement of materials refer to the specific FacadesXi System specifications.
2. Sealant should be omitted if the Parapet assembly must drain at this location.
3. Responsibility of the flashing is not necessarily that of the plastering contractor and should be denoted in the contract documents.
4. See Detail I.3 for material options.

DISCLAIMER: FACADESXI details are recommendations that should be used for guidance only. There may be equivalent means of installation that are not shown in FACADESXI assembly details. All FACADESXI products shall be installed in accordance with FACADESXI product datasheets and all applicable building codes and industry standard practices. The design, engineering and final details incorporating any FACADESXI product are the sole responsibility of the project design professional. FACADESXI is not responsible for determining the acceptability and/or applicability of any FACADESXI product or detail for any specific project or condition. FACADESXI disclaims all liability for improper installation, workmanship, or design by a third-party. EXCEPT FOR ANY EXPRESS REPRESENTATIONS AND WARRANTIES BY FACADESXI, ALL IMPLIED WARRANTIES OF ANY KIND, INCLUDING BUT NOT LIMITED TO WARRANTIES OF MERCHANTABILITY OR FITNESS FOR A PARTICULAR PURPOSE OR COMPLIANCE WITH LAWS OR GOVERNMENT RULES OR REGULATIONS APPLICABLE TO THE PROJECT, ARE HEREBY DISCLAIMED. FACADESXI's website should always be consulted for the latest version of any details and/or product information. Contact FACADESXI for any technical assistance.

FACADESXi